



PETER LEBECK CHAPTER 1866

(Chartered 1962)
(Kern County)

1. JOSEPH REDDEFORD WALKER, Kern County,
10/19/1963

"Dedicated in memory of Joseph Reddeford Walker, who discovered this pass in 1834. Peter Lebec Chapter and Patrix Chapter, ECV, October 19, 1963."

(The spelling of "Lebec" was changed in 1964.)

(Plaque located at Walker Pass, summit of State Hwy. 178.)

2. LIZZIE KERSEY, Kern County, 10/12/1968

"Piute Ranch, home site of Elizabeth 'Lizzie' McGuirk, Scobie, Shipsey, Kersey, 1860-1932. Came to territory by covered wagon in 1865. Settled here in 1876. Owned and operated Gwynne Gold Mine, store, hotel, and stage station. Cattle rancher, Indian agent, postmaster. Dedicated by E Clampus Vitus, Peter Lebeck Chapter 1866, October 12, 1968."

(Plaque located between Caliente and Havilah, at Piute Ranch, on Caliente Creek Road.)

3. BURRO SCHMIDT FAMOUS TUNNEL, Kern County,
5/16/1970

"A monument to determination and perseverance. William Henry 'Burro' Schmidt took thirty-eight years to hand-dig this half-mile long tunnel completed in 1938. Born in Rhode Island, January 30, 1871 - died in Ridgecrest, Calif., January 27, 1954. And So Recorded. May 16, 1970, E Clampus Vitus, Peter Lebeck Chapter 1866."

(Plaque located 17 miles south of Randsburg, in Mojave Desert.)

4. PETER LEBECK, Kern County, 10/14/1972

"PETER LEBECK - killed by a bear October 17, 1837. In memory of a pioneer of whom only conjecture can speak. Dedicated October 14, 1972, E Clampus Vitus, Peter Lebeck Chapter 1866."

(Plaque located at Fort Tejon.)

5. OLD KERNVILLE, Kern County, 5/5/1973

"Below this point on the Lake Isabella lakebed stood Williamsburg, popularly known as Whiskey Flats, established in 1863, renamed Kernville in 1864. Inundated in 1953 following completion of Isabella Dam. Plaque placed by Peter Lebeck Chapter 1866, ECV, 1973."

(Plaque located at Isabella Dam.)

6. FIRST KERN COUNTY COURTHOUSE, Kern County,
1980

7. COLONEL THOMAS BAKER, Kern County, 1980

8. ALPHONSE WEILL, Kern County, 1980

9. FIRST KERN COUNTY HOSPITAL, Kern County, 1980
(The four plaques above are located at Bakersfield, erected in cooperation with the Kern County Historical Society and the Kern County Museum.)

10. RANDBURG, San Bernardino County, 10/8/1989

(Joint dedication with Billy Holcomb (q.v.), John P. Squibob, and Slim Princess Chapters.)

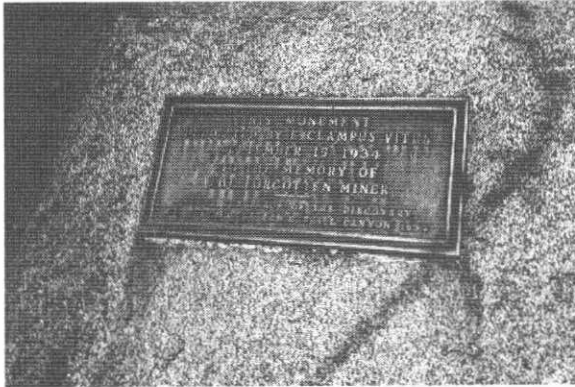
(Plaque located at Randsburg, at the jail.)

PLATRIX CHAPTER NO. 2

(Organized 1933)

(Los Angeles and Orange Counties)

1.



1. SAN GABRIEL CANYON GOLD DISCOVERY, Los Angeles County, 9/15/1934

"This monument dedicated by E Clampus Vitus, September 15, 1934, to the memory of the forgotten miner, marks the place of discovery of gold in San Gabriel Canyon, 1854."

(Plaque located on private property, attached to large boulder at spot where gold was discovered in San Gabriel Canyon. This was the first plaque dedicated by E Clampus Vitus Redivivus.)

5.



2. PANAMINT, Inyo County, 11/11/1935

"PANAMINT. In memory of the forgotten miner. Dedicated by E Clampus Vitus, November 11, 1935."

(Joint with Yerba Buena Redivivus Capitulus No. 1.)

(Plaque located at site of ghost town of Panamint, attached to wall of Stewart Hunter Mill ruins.)

3. AVILA ADOBE, Los Angeles County, 2/8/1936

"AVILA ADOBE. In memory of the forgotten moments medication. Dedicated by E Clampus Vitus, February 8, 1936."

(Plaque located at Los Angeles, on Olvera Street, behind Avila Adobe.)

4. JAMES W. MARSHALL, Sacramento County, 2/22/1936
"JAMES W. MARSHALL on January 28, 1848, here disclosed to Capt. Sutter his discovery of gold made at Coloma four days before. Placed by E Clampus Vitus, February 22, 1936."

(Joint dedication with Yerba Buena Chapter No. 1.)

(Plaque located at Sutter's Fort, placed on door of room where James W. Marshall first disclosed his discovery to Capt. Sutter.)

5. CALICO, San Bernardino County, 4/12/1936

"CALICO. In memory of the forgotten miner. Dedicated by E Clampus Vitus, April 12, 1936."

(Plaque located on outside wall of saloon at Calico Ghost Town, a San Bernardino County Regional Park, off I-15 several miles east of Barstow.)

6. CALIFORNIA'S FIRST MINT, Mariposa County, 6/16/1936

"Here, at California's first mint, octagonal fifty dollar gold slugs were produced under authority of Congress in 1851. Dedicated by E Clampus Vitus, June 16, 1936."

(Joint "Clampilgrimage"/dedication with Yerba Buena Chapter No. 1.)

(Plaque located at ruins of Mt. Ophir, off State Highway 49, about 1 1/2 miles north of Mt. Bullion.)

7.



7. FORT TEJON, Kern County, 10/17/1937

"FORT TEJON. Dedicated to the memory of Lieutenant Thomas F. Castor and Privates O. B. Miller, John Garvin, Joseph Field, Gustavus Berke, Patrick Otis, William Thorpe, James Anderson, by E Clampus Vitus, October 17, 1937."

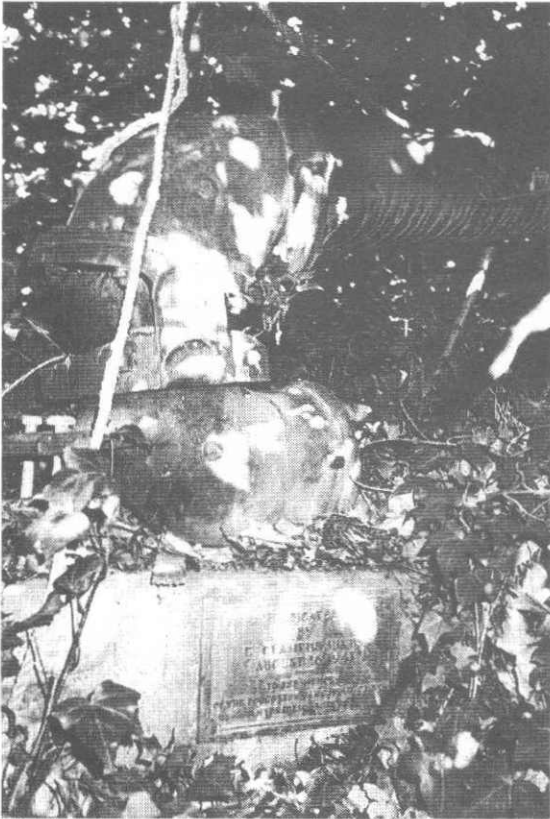
(Plaque was placed at Fort Tejon Historic State Park. Plaque now (1992) on display at Old Timers Museum, Murphys.)

8. VALLECITO, San Diego County, 5/21/1938

"VALLECITO. In memory of the forgotten driver of the Butterfield Stagecoach. Dedicated by E Clampus Vitus, May 21, 1938."

(Plaque was placed at Vallecito, but was removed.)

9.



9. SAN GABRIEL CANYON HYDRAULIC MINE, Los Angeles County, 8/16/1941

"Dedicated by E Clampus Vitus, August 16, 1941. To the memory of the forgotten San Gabriel Canyon hydraulic miner." (Plaque located on east fork of San Gabriel River, next to Sedley Peck Museum, at what is now Old Follows Camp.)

10. GEORGE EZRA DANE, Tuolumne County, 9/20/1947

"This plaque dedicated in grateful memory of George Ezra Dane, Historian, Clamper Extraordinary and teller of tall tales, author of 'Ghost Town' and other Gold Rush stories. Unveiled September 20, 1947 by E Clampus Vitus." (Plaque located at Columbia State Historic Park, Main Street, on outside wall of Douglass Saloon.)

10.



11.



11. DEATH VALLEY SALT HOLES, Inyo County, 12/4/1949

"These Salt Holes dedicated to the memory of William Lewis Manly and John Rogers, 1849. Platrix Chapter ECV, 1949." (Plaque located at Bad Water in Death Valley.)

12.



12. QUARTZBURG AND KERVILLE PIONEERS, Kern County, 10/1/1950

"Dedicated to the memory of Quartzburg and Kernville pioneers who lie here. Kern County is their monument. Platrix Chapter ECV, October 1, 1950." (Plaque located at entrance to Old Kernville Cemetery.)

13. FORGOTTEN TRAILBLAZERS OF THE COLORADO DESERT, San Diego County, 11/17/1951

"Dedicated to the forgotten trailblazers of the Colorado Desert. ECV, November 17, 1951." (Plaque located at Anza-Borrego Desert State Park, at Borrego Springs, near Borrego-Coyote Canyon, at approximate site of De Anza camp where first white child was born in California.)

13.



14. PIONEERS OF OLD MAMMOTH, Mono County, 9/15/1952

"In honor of the achievements of the pioneers of Old Mammoth, circa 1877. Dedicated September 15, 1952 by E Clampus Vitus."

(Plaque located at townsite of Old Mammoth, south of Mammoth Lakes resort area, on Old Mammoth Road.)

15. LA PURISIMA MISSION, Santa Barbara County, 10/11/1953

"Original site of Mission la Concepcion Purisima Maria de Santisima, founded December 8, 1787. Destroyed by earthquake 1812. Relocated at present site n.e. of City of Lompoc. October 11, 1953, Platrix Chapter, E Clampus Vitus."

(Plaque located at Lompoc, at corner of South F Street and Locust Avenue.)

16. MULE HILL, San Diego County, 10/31/1954

"MULE HILL. Companies C and K, 1st United States Dragoons, under Brig. Gen'l. S. W. Kearny were besieged in this position December 7-10, 1846, by General Andres Pico and his Californians, following the Battle of San Pascual. E Clampus Vitus, Platrix Chapter No. 2. Dedicated October 31, 1954."

(Plaque located at Mule Hill, east of Escondido.)

14.

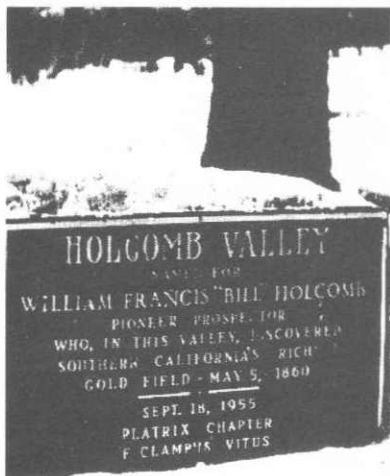


17. HOLCOMB VALLEY, San Bernardino County, 9/18/1955

"HOLCOMB VALLEY. Named for William Francis 'Bill' Holcomb, Pioneer prospector who, in this valley, discovered Southern California's richest gold field - May 5, 1860. Sept. 18, 1955, Platrix Chapter, E Clampus Vitus."

(Plaque located at Holcomb Valley - remounted at Bellevill 10/7/79, built into monument along with "Bellevill Holcomb Valley" plaque by Billy Holcomb Chapter 1069.)

17.



18. JACKASS MAIL, San Diego County, 9/15/1956

"The San Antonio - San Diego mail of 1857. The first official transcontinental overland mail stage line in the United States. 'Jackass Mail.' Julian Sandoval's Stage Station. E Clampus Vitus, Platrix Chapter, Sept. 15, 1956."

(Plaque was located at Descanso; present whereabouts unknown.)

19.



21.



19. CAMEL BRIGADE, Kern County, 9/21/1957
 "The first and only 'Camel Brigade' of the United States Army, commanded by Lt. Edward F. Beale, 1857 - 1861, San Antonio, Texas to Fort Tejon, California. E Clampus Vitus, Platrix Chapter, September 21, 1957."
 (Plaque located at Fort Tejon State Historic Park, off I-5 freeway, south of Gorman.)

20. AGUANGA - BUTTERFIELD OVERLAND MAIL STATION, Riverside County, 10/5/1958
 "AGUANGA - BUTTERFIELD OVERLAND MAIL STATION, 1858 - 1861. The first west bound coach passed this swing station Oct. 6, 1858. Later it was called 'The Dutchman's' after Jacob Bergman, stage driver, station keeper, soldier and rancher, who settled here. To all the keepers of such lonely stations this plaque is dedicated. E Clampus Vitus, Platrix Chapter No. 2 Los Angeles, Oct. 5, 1958."
 (Plaque located at Aguanga Station site.)

21. SAM BRANNAN, San Diego County, 10/11/1959
 "SAM BRANNAN. 1819 - 1889. California Pioneer of '46. Dreamer - Leader - and Empire Builder."
 (Plaque located at Sam Brannan's grave, Mount Hope Cemetery, San Diego.)

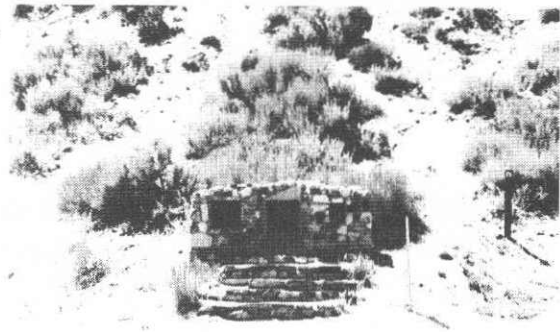
22. CAPTAIN GEORGE NIDEVER, Santa Barbara County, 10/1/1960
 "1840 homesite of Captain George Nidever, frontiersman, 1802-1883, the rescuer of Juana Maria, the 'lone woman of San Nicolas Island' in 1853. Platrix Chapter, E Clampus Vitus, Oct. 1st, 1960."
 (Plaque was located at Santa Barbara at site of Nidever home, but is now missing. Site was redeveloped.)

23. RIOS ADOBE, Orange County, 10/7/1961
 "Oldest adobe residence in California. Owned and occupied continuously by the Rios family since 1794. Dedicated by Platrix Chapter, E Clampus Vitus, Oct. 7th, 1961."
 (Plaque located at San Juan Capistrano, on exterior wall of Rios Adobe.)

23.



25.



24. OLD SPANISH TRAIL, San Bernardino County, 9/29/1962
 "Site of the old Spanish Trail and route of Walkara's horse-thieving forays, 'greatest horse thief in history'. Installed by Platrix Chapter E Clampus Vitus, Sept. 29th, 1962."
 (Plaque was located at Cedar Springs in San Bernardino National Forest. Area now (1992) under waters of Lake Silverwood, created by Cedar Springs Dam. Plaque location is unknown.)

25. JOSEPH REDDEFORD WALKER, Kern County, 10/19/1963
 "Dedicated in memory of Joseph Reddeford Walker who discovered this Pass in 1834, by Peter Lebeck Chapter and Platrix Chapter ECV, October 19, 1963."
 (Plaque located at summit of Walker Pass, State Highway 178.)

26. ORTEGA RANCH - OLDEST LEMON TREE IN CALIFORNIA, Santa Barbara County, 5/23/1964
 "California's oldest living lemon tree. Platrix Chapter ECV."
 (Plaque located on private property, Rancho Tajiguas, north of Refugio State Beach.)

28.



27. VIRGINIA DALE GOLD MINE, Riverside County, 10/17/1964
 "THE VIRGINIA DALE GOLD MINE, Platrix Chapter ECV, October 17, 1964."
 (Plaque located at Joshua Tree.)

28. FOXEN ADOBE, Santa Barbara County, 10/16/1965
 "FOXEN ADOBE 1837. Benjamin Foxen, English Seaman, built the first schooner launched on the California coast 1830. He settled Rancho Sisquoc here in 1837. The adobe was a stage stop between 1870-1877. Platrix Chapter, E Clampus Vitus."
 (Plaque located on Foxen Canyon Road, south of Sisquoc, in Foxen Canyon.)

29.



29. CAMP CADY, San Bernardino County, 10/1/1966
 "CAMP CADY, 1860 - 1866, First California Dragoons. E Clampus Vitus, Oct. 1, 1966."
 (Plaque located at site of Camp Cady.)

30. THE FIVE BRANDS OF IRVINE, Orange County, 10/22/1967
 "THE FIVE BRANDS OF IRVINE, (five brand symbols). Placed October 22, 1967, Platrix Chapter, E Clampus Vitus."
 (Plaque located at Bommer Canyon.)

31. RANCHO SANTA ROSA, Riverside County, 10/6/1968
 "RANCHO SANTA ROSA, 47,815.1 Acres. Granted by Governor Pio Pico to Juan Moreno January 30, 1846 and patented to him by the United States October 10, 1872. Dedicated by Platrix Chapter, E. Clampus Vitus, October 6, 1968."
 (Plaque located near Temecula, at California Nature Conservatory.)

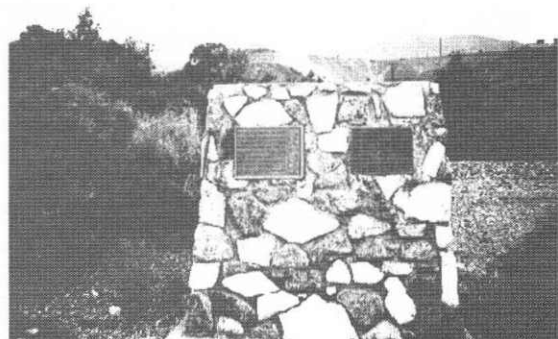
32. DON MANUEL DOMINGUEZ, Los Angeles County, 10/4/1970
 "Honoring DON MANUEL DOMINGUEZ, 1803 - 1882. Alcalde, Statesman, Soldier Progenitor & Prototype Clamper. Dedicated October 4, 1970 by Platrix Chapter #2, E Clampus Vitus."
 (Plaque was located at Rancho Dominguez Hills, 18,127 S. Alameda St., Compton. Plaque was stolen and replaced in 1977. See #37 below.)

33. STODDARD WELLS, San Bernardino County, 4/23/1971
 "In 1853, Arvin Nathaniel Stoddard discovered gold and water at a location 20 miles north and east of the present site of Victorville. Stoddard recovered 3,400 ounces of gold in eight years of prospecting and mining. Now over 120 years later, his wells are still flowing. E Clampus Vitus, April 1971."
 (Plaque located at Stoddard Well, n.e. of Victorville, off I-15 highway in region of Bell Mountain.)

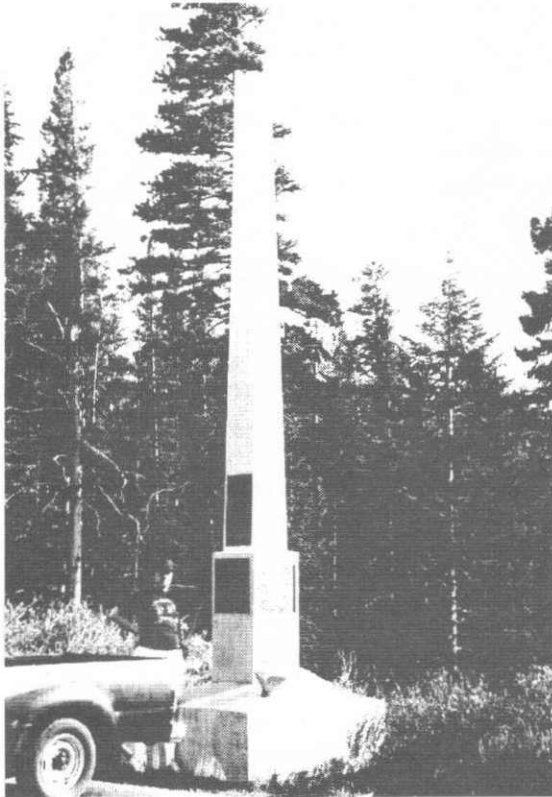
34. ALCATRAZ ASPHALT MINE, Santa Barbara County, 10/5/1974
 (Plaque located at Rancho San Juan, off Foxen Canyon Road.)

35. GOLDEN SPIKE. SOUTHERN PACIFIC RAILROAD, Los Angeles County, 9/5/1976
 "Lang Station, on this exact site (or hereabouts) 100 years ago Clamper Charles Crocker drove a spike of pure California gold completing the Southern Pacific Railroad link between San Francisco & Los Angeles, Queen of Counties. Dedicated September 5, 1976, Platrix Chapter No. 2, E Clampus Vitus."
 (Plaque located at Lang Station, near intersection of Antelope Freeway and Soledad Canyon Road, next to railroad tracks.)

35.



36.

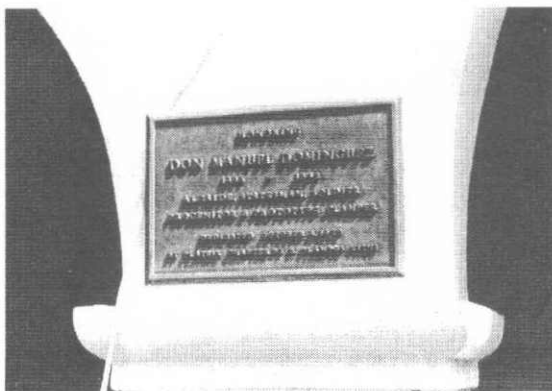


36. SNOWSHOE THOM(P)SON, Alpine County, 7/10/1977
 "SNOWSHOE THOM(P)SON, (John Tostensen). A true pioneer, '...There ought to be a shaft raised to Snowshoe Thompson: not of marble; not carved and not planted in the valley, but a rough shaft of basalt or of granite, massive and tall, with top ending roughly, as if broken short, to represent a life which was strong and true to the last. And this should be upreared on the summit of the mountains over which the strong man wandered so many years, as an emblem of that life which was worn out apparently without an object...' Attributed to: Dan Dequille, Territorial Enterprise, May 19, 1876. Dedicated this 10th day of July 1977, as a founded and endorsed Bicentennial project, by the Nevada members of the Ancient and Honorable Order of E Clampus Vitus."

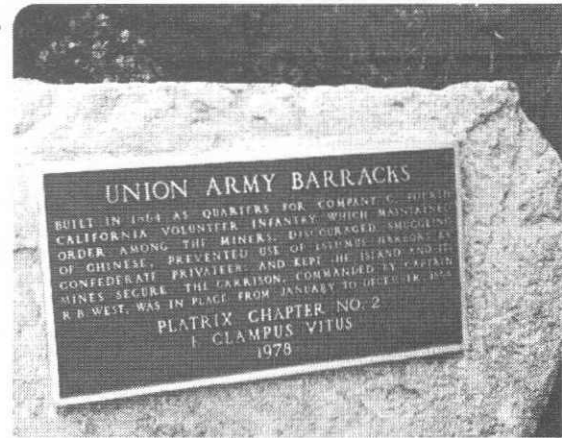
(Three additional bronze plaques on the monument list the major donors for this project; Platrix is listed as one of 21 ECV chapters which were major donors.)

(Plaque located at summit of Carson Pass on S.R. 88.)

37.



38.



37. DON MANUEL DOMINGUEZ, Los Angeles County, 10/8/1977

(Plaque replaced October 8, 1977 with a new plaque identical to stolen first plaque (see #32 above).)

(Plaque located at Rancho Dominguez Hills, 18127 S. Alameda Street, Compton.)

38. UNION ARMY BARRACKS, Los Angeles County, 10/1/1978

"UNION ARMY BARRACKS, built in 1864 as quarters for Company C, Fourth California Volunteer Infantry, which maintained order among the miners, discouraged smuggling of Chinese, prevented use of Isthmus Harbors by Confederate privateers, and kept the islands and its mines secure. The garrison, commanded by Captain R. B. West, was in place from January to December 1864. Platrix Chapter No. 2, E Clampus Vitus, 1978."

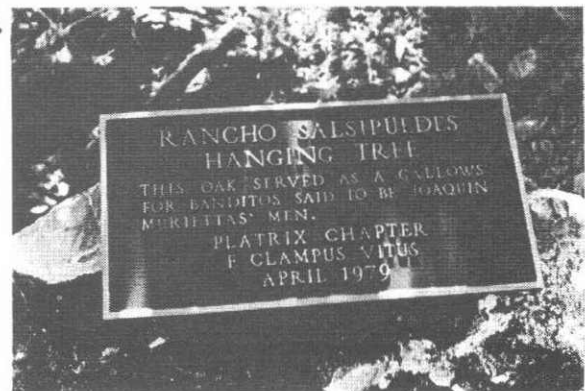
(Plaque located at Santa Catalina Island, at Isthmus Cove.)

39. RANCHO SALSIPUEDES HANGING TREE, Santa Barbara County, 4/28/1979

"RANCHO SALSIPUEDES HANGING TREE. This oak served as a gallows for banditos said to be Joaquin Murietta's men. Platrix Chapter, E Clampus Vitus, April, 1979."

(Plaque located on private property, Rancho Salsipuedes, southeast of Lompoc.)

39.



40. HENRY MAYO NEWHALL, Los Angeles County, 4/27/1980

"HENRY MAYO NEWHALL. Native of Saugus, Massachusetts, arrived in San Francisco via canoe, muleback and the steamship 'Panama' on July 6th, 1850. Gold Rush participant, businessman and auctioneer, pioneer railroad builder, early developer of California's cattle industry and agriculture; he purchased El Rancho San Francisco in 1875 which, after his death in 1882, became the Newhall Land & Farming Company. Dedicated April 27, 1980, E Clampus Vitus, Platrix Chapter No. 2."

(Plaque located at Newhall, at Santa Clarita Valley Historical Society on San Fernando Road.)

41.



41. INSPIRATION POINT, Tuolumne County, 5/26/1980 (Joint dedication with Matusca Chapter 1848 (q.v.), Yerba Buena Redivivus Capitulus No. 1, Lord Sholto Douglas Chapter No. 3, Quivira Chapter No. 4, New Helvetia Chapter No. 5.) (Plaque located at Parrott's Ferry Overlook, Stanislaus River, 1/4 mile from new Parrott's Ferry Bridge.)

42.



43. WILLIAM DEWEY HOBSON, Ventura County, 10/5/1980

"Born Green County, Illinois 1829, crossed plains to the gold fields in ox-drawn wagon 1849. Settled permanently San Buenaventura 1859, becoming farmer, builder, newspaperman and civic leader. Appointed by his fellow citizens in 1871 to represent them in Sacramento, he successfully lobbied for the creation of Ventura County. Built the first two public buildings, a schoolhouse in 1872, and the county courthouse in 1874. Father of ten. Died in 1915. Dedicated October 5, 1980, Platrix Chapter No. 2, E Clampus Vitus."

(Plaque located at Ventura, on exterior wall of Patagonia's headquarters building, next to entrance, 259 W. Santa Clara Street.)

44. TANBARK FLATS, Los Angeles County, 4/25/1981

"TANBARK FLATS. This monument is dedicated to the far-sighted pioneers in watershed research who conceived and established the San Dimas Experimental Forest. The 50 years of research conducted here has benefited people in all parts of the world. Erected April 25, 1981 by Platrix Chapter No. 2, E Clampus Vitus."

(Plaque located at Tanbark Flats in San Dimas Experimental Forest north of San Dimas.)

45. SOLEDAD (CEDAR) MINING DISTRICT, Los Angeles County, 10/4/1981

"To the gold miners of the mines of Soledad (Cedar) Mining District. The highest producing mines of the district were the Eureka, Escondido, Saratoga, Red Rover, Eclipse, New York.

44.



During the times the mines have been in operation, from the beginning in 1861 down to the present, over five million dollars in gold ore has been brought out. Platrix Chapter No. 2, E Clampus Vitus, October 4, 1981.”
(Plaque located at Vasquez Rocks County Park, off Highway 14, near Agua Dulce.)

46. TAR SPRINGS RANCH - REDIVIVUS REUNION, San Luis Obispo County, 4/25/1982
“TAR SPRINGS RANCH REDIVIVUS REUNION, 1932 - 1982. From the north came Yerba Buena Chapter No. 1 and from the south came Platrix Chapter No. 2, travelling by train to celebrate 50 years since the revival of the Honorable Order of E Clampus Vitus. These bands of red-shirted brethren met on the pastures of the Loomis family’s Tar Springs Ranch, a portion of the vast Santa Manuela Rancho granted to Francis Ziba Branch in 1837 and the Huasna Rancho granted to Isaac J. Sparks in 1843 by the Mexican Government. So recorded: 25 April 1982, Platrix Chapter No. 2, Yerba Buena Chapter No. 1, E Clampus Vitus.”
(Plaque located at Tar Springs Ranch, Arroyo Grande.)

47.



47. OLD PLAZA FIRE HOUSE, Los Angeles County, 8/6/1982
“A permanent base for this State Historic Landmark Plaque recognizing the Old Plaza Firehouse No. 1 was erected by E Clampus Vitus, Platrix Chapter No. 2, on August 6, 1982.”
(Plaque located at Los Angeles, at the Old Plaza on south end of Olvera Street, at entrance to Old Firehouse No. 1.)

49.



48. COJO RANCH, Santa Barbara County, 10/3/1982
“COJO RANCH. Portion of Rancho Punta de la Concepcion, a 25,000 acre grant from California Governor Juan B. Alvarado to Anastacio Carrillo in May, 1837. The original adobe ranch house, built around 1840, still stands near this plaque. The Cojo operated as a cattle ranch and its bay offered safe harbor for numerous ships passing Point Concepcion. The ranch was sold to Patrick W. Murphy in 1876 and acquired by Fred H. Bixby in 1912. For over 70 years Fred H. Bixby and his successor, The Bixby Ranch Company, have carried on the cattle ranching tradition of this property and worked to preserve its integrity in an ever changing California. Plaque dedicated October 3, 1982, Platrix Chapter No. 2 - Queen of the Cow Counties, E Clampus Vitus.”
(Plaque located at Cojo Ranch.)

49. LUCAS CANYON, Orange County, 10/9/1983
“LUCAS CANYON. Site of the legendary ‘Lost Gold Mine’ of Mission San Juan Capistrano. Donde sale el sol y donde se mete. Seek and ye shall find. Dedicated on October 9th, 1983, Platrix Chapter No. 2, E Clampus Vitus.”
(Plaque located at Lucas Canyon, off S.R. 74, east of San Juan Capistrano.)

50. PINE FLAT, Los Angeles County, 10/7/1984
“PINE FLAT. Site of Crystal Lake, the only natural lake in the San Gabriel Mountains. There is evidence that very early timber cutting took place here, and a legend that the lumber was used in the construction of Mission San Gabriel. Grizzly bears, mountain lions and deer attracted hunters as early as the 1860’s. About 1910, the lake became popular as a recreation area. The campgrounds were developed by Los Angeles County in 1928, and reverted back to the U. S. Forest Service in 1943. Dedicated on October 7th, 1984, Platrix Chapter No. 2, E Clampus Vitus.”
(Plaque located at Crystal Lake Campground in Angeles National Forest, 25 miles north of Azusa, off S.R. 39, at amphitheater.)

51. ANAHEIM STADIUM, Orange County, 8/3/1985
“ANAHEIM STADIUM. Symbolizing its 136 years of athletic support, E Clampus Vitus pays tribute to the City of Anaheim, sports capital of Orange County, home of the California Angels and the Los Angeles Rams. E Clampus Vitus, Platrix Chapter No. 2, August 3, 1985.”
(Plaque located at Anaheim Stadium, near main entrance.)

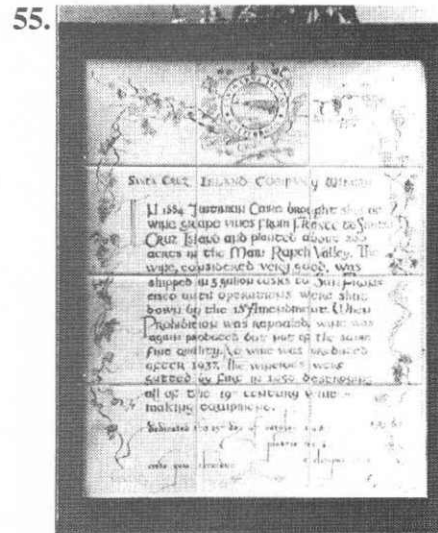
52. FAR WESTERN TAVERN, Santa Barbara County, 10/5/1986
“FAR WESTERN TAVERN. Built in 1912 by Ercolina Forni and Bergam Carenini. First known as Palace Hotel. Sold in 1944 to Elvezia and Angelo Ferrari. In 1958 purchased by Rosalie and Clarence Minetti with Betty Jean and Richard Maretti. This tavern has become renowned as the Home of the Famous Bull’s Eye Steak. Dedicated Oct. 5, 1986, E Clampus Vitus, Platrix Chapter No. 2.”
(Plaque located in Guadalupe, on Highway 1.)



54. ECV MOBILE BAR AND GRILL, San Luis Obispo County, 10/3/1987
 "ECV MOBILE BAR AND GRILL. Original replica of essential bar and pleasure palace accoutrements of Roger's ECV Saloon circa 1853, dedicated Oct. 3, 1987, E Clampus Vitus." (When not in use, mobile bar and grill is housed in San Luis Obispo at Marshall Canyon Antique Artifacts Society; Roger Marshall, Curator.)



53. PRISONER HOSTEL, Kern County, 4/26/1987
 "PRISONER HOSTEL. Upon these foundations stood the lodging place for prisoners who built the road from whence you came, around 1846. Platrix, ECV, April 1987." (Plaque located at Keene Ranch, on Woodford-Tehachapi Road, near Tehachapi Loop.)



55. SANTA CRUZ ISLAND WINERY, Santa Barbara County, 10/25/1987
 "SANTA CRUZ ISLAND COMPANY WINERY. In 1884 Justinian Caire brought slips of wine grape vines from France to Santa Cruz Island and planted about 200 acres in the Main Ranch Valley. The wine, considered very good, was shipped in 5 gallon casks to San Francisco until operations were shut down by the 18th Amendment. When Prohibition was repealed, wine was again produced but not of the same fine quality. No wine was produced after 1937. The wineries were gutted by fire in 1950, destroying all of the 19th Century wine-making equipment. Dedicated this 25th day of October 1987, Platrix No. 2, Credo Quia Absurdum, E Clampus Vitus." (Plaque located on Santa Cruz Island, at old winery site.)



56. CRYSTAL LAKE, Los Angeles County, 4/24/1988
 "CRYSTAL LAKE. Known to Mission Padres, Crystal Lake is the only natural lake in the San Gabriel Mountains. R. W. Dawson visited the lake in 1876, and later built a cabin nearby. Pasadena Judge Benjamin Eaton wrote in 1887 that 'The water is clear as a crystal and our party found it good to drink.' In 1897 Dawson sold out to the Crystal Lake Irrigation Power Co., but insufficient water doomed company plans. Los Angeles County acquired the area in 1928, opened the campground in 1932, and transferred it to the U. S. Forest Service in 1943. Erected by Platrix Chapter No. 2, E Clampus Vitus, April 24, 1988." (Plaque located at Crystal Lake in Angeles National Forest, 25 miles north of Azusa, off S.R. 39.)

57.



57. THE ROCHIN ADOBE, Santa Barbara County, 7/16/1988 (Dedicated by the Vituscan Missionaries of Platrix Chapter; see: De la Guerra y Pacheco Chapter 1.5.) (Plaque located at Rochin Adobe, 820 Santa Barbara Street, Santa Barbara.)

58.



58. POINT CONCEPTION LIGHTHOUSE, Santa Barbara County, 10/9/1988
 "POINT CONCEPTION LIGHTHOUSE. The first lighthouse, completed in 1856 on the highest ground, was a brick tower above a wooden building. Damaged by an earthquake in January 1857, it was rebuilt in 1881 at the present lower location and houses the original 16 panel Fresnel Prism Lens crafted by Henri LePaute in France in 1854. Illumination has been provided by whale oil, kerosene, incandescent oil-vapor and a 1,000 watt mercury vapor lamp. Manned for 117 years until 1973, it was relinquished by the Lighthouse Service to the U. S. Coast Guard in 1938, and is now automated and controlled from Point Arguello. Dedicated October 9, 1988, Platrix Chapter No. 2, E Clampus Vitus."
 (Plaque located at Point Conception Lighthouse.)

59.



59. LOS ANGELES UNION PASSENGER TERMINAL, Los Angeles County, 5/7/1989
 "LOS ANGELES UNION PASSENGER TERMINAL, 1939 - 1989. Constructed by the Southern Pacific, Santa Fe, and Union Pacific Railroads. Opened on May 7, 1939. It was considered to be the most impressive railroad station of its type in the entire west. In its heyday the terminal covered 52 acres, employed 1,100 persons, served 56 trains per day, and handled 23 million sacks of mail annually. Through the portals of this historic edifice have passed the great and the near-great of the world. Dedicated on May 7, 1989 by Platrix Chapter No. 2, E Clampus Vitus."
 (Plaque located at Union Station, Alameda Street, Los Angeles; on wall of alcove, north side of terminal.)

60.



60. HISTORIC CATTLE BRANDS OF RANCHO MISSION VIEJO, Orange County, 10/8/1989
 "HISTORIC CATTLE BRANDS, RANCHO MISSION VIEJO. 1776-1833, Mission, 1841-1845, Arguello, 1845, Olvera, 1846-1882, Forster, 1882-1941, Flood-O'Neill, 1943-present, O'Neill. Dedicated by Platrix Chapter No. 2, E Clampus Vitus, October 8, 1989."
 (Plaque located at front entrance to Rancho Mission Viejo headquarters, east of San Juan Capistrano, on Ortega Highway, S.R. 79.)

61. HISTORIC CATTLE BRANDS OF RANCHO MISSION VIEJO, Orange County, 10/8/1989
 (Plaque identical to #60 above.)
 (Plaque located at "El Adobe" Restaurant, San Juan Capistrano. Part of the restaurant was once the old adobe jail.)



62. THE MASINI ADOBE, Santa Barbara County, 12/2/1989
 "THE MASINI ADOBE. Built in 1820, on part of the Ortega Ranch, this is one of the few surviving two-story adobes, and is an excellent example of the Cantilevered Balcony style of Monterey architecture. The adobe has had few owners in its 169 years. Newton Coats purchased it in 1858 when he got the 190 acre Las Fuentes Ranch (now Birnam Wood). Pedro Masini purchased the adobe and 37 acres from Coats in 1869. His daughter sold it in 1879 to Josefa Etchas and it has remained in the family since then. In December 1881, Giovanni B. Trabucco was found murdered in the kitchen. His assailants had tortured him in hopes of finding a cache of gold he had hidden on the property. Five Montecito youths were charged with the murder but released for lack of evidence. The gold was never found. If anyone finds the gold, please turn it over to the local chapter of E Clampus Vitus so that it can be returned to its rightful owner. Dedicated to the present owners: The Meyer's family this 2nd of December, 1989. Platrix Chapter #2, E Clampus Vitus."

63. HOLLISTER TRAIN SERVICE, San Benito County, 4/25/1992
 (Joint dedication with Monterey Viejo Chapter 1846 (q.v.).)
 (Plaque located at Hollister at old railroad depot.)



64. OAK OF THE GOLDEN DREAM, Los Angeles County, CRHL #168, 11/15/1992
 "OAK OF THE GOLDEN DREAM. Francisco Lopez made California's first authenticated gold discovery on March 9, 1842. While gathering wild onions near an oak tree in Placerita Canyon he found gold particles clinging to the roots of the bulbs. The San Fernando Placers and nearby San Feliciano Canyon were worked by Sonoran miners using panning, sluicing and dry washing methods. Lopez's find predated James Marshall's strike at Sutter's Mill by six years. California Registered Historical Landmark No. 168."
 "First registered March 6, 1935. Plaque placed by the State Department of Parks and Recreation in cooperation with the Santa Clarita Valley Historical Society and Platrix Chapter No. 2, E Clampus Vitus, November 15, 1992."
 (Plaque located at Placerita Canyon Park, 19152 W. Placerita Canyon Road, Newhall. Plaque is next to "Oak of the Golden Dream", western edge of park.)



SAM BRANNAN CHAPTER 1004

(Chartered 1963; dissolved 1969;
rechartered 1974)

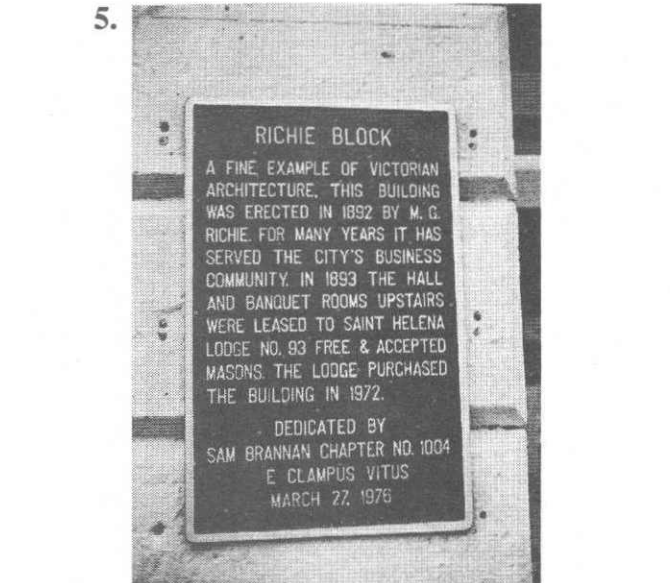
(Napa, Glenn, Colusa, and Yolo Counties)

1. SAM BRANNAN, Sutter County, 4/13/1963
(See Wm. Bull Meek - Wm. Morris Stewart No. 10, rededication 5/3/1986.)
(Plaque located at Yuba City, Sam Brannan Park.)

2. DOBBINS, Yuba County, 6/11/1974
(Plaque located 30 mile northeast of Marysville.)



3. KNIGHT'S LANDING, Yolo County, 3/23/1974
"KNIGHT'S LANDING. It was here on the Sacramento River that William Knight settled in 1843. This natural landing place was to become an important landing and shipping point in this area. It wasn't until 1853, four years after Knight's death, that the townsite was officially named Knight's Landing. Dedicated by Sam Brannan Chapter No. 1004, E Clampus Vitus, March 23, 1974."
(Plaque located at Knights Landing, corner of Third Street and Highway 113.)

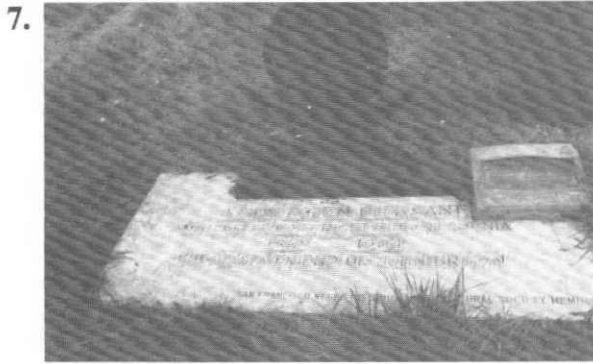


4. PIONEER CEMETERY, Napa County, 8/16/1975
"PIONEER CEMETERY. Dating back to the 1880's, this cemetery served as the final resting place for many of the famous Upper Napa Valley pioneers. It wasn't until 1885 that this cemetery site was surveyed and was permanently established as a cemetery known today as Pioneer Cemetery. Dedicated by Sam Brannan Chapter No. 1004, E Clampus Vitus, August 16, 1975."
(Plaque located one half mile north of Calistoga, on Hwy. 29.)

5. RICHIE BLOCK, Napa County, 3/27/1976
"RICHIE BLOCK. A fine example of Victorian architecture, this building was erected in 1892 by M. G. Richie. For many years it has served the city's business community. In 1893 the hall and banquet room were released to Saint Helena Lodge No. 93 Free & Accepted Masons. The Lodge purchased the building in 1972. Dedicated by Sam Brannan Chapter No. 1004, E Clampus Vitus, March 27, 1976."
(Plaque located in Saint Helena, on Main Street.)

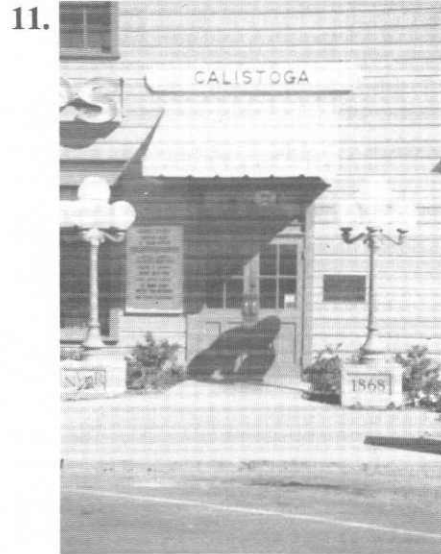
6. OLD ADOBE, Napa County, 3/19/1977
"OLD ADOBE. Built in 1840 by Don Cayetano Juarez as part of his original Rancho Tulucay, this structure is one of the few remaining nineteenth century adobe buildings from the ranchos formed by the Mexican landgrants in Napa. Built of Adobe mud bricks, the simple design and uncommon building material give it unique visual qualities. Dedicated by Sam Brannan Chapter No. 1004, E Clampus Vitus, March 19, 1977."
(Plaque located at Napa, at 376 Soscol Avenue.)

7. MAMMY PLEASANT, Napa County, 2/4/1978
"MAMMY PLEASANT. In memory, ECV honors one of the most remarkable, unique women of early San Francisco history. Dedicated February 4, 1978, Mammy Pleasant Benevolent Society of Sam Brannan Chapter No. 1004, E Clampus Vitus."
(Plaque located in Tulocay Cemetery, 411 Coombville Rd., Napa, at Redwood and Circle Drives.)



8. ARBUCKLE, Colusa County, 3/18/1978
 "In 1859 Tacitus Ryland Arbuckle located a homestead in the Sacramento Valley, and in 1875 had the land platted for a townsite. The legendary Arbuckle founded the town, deeded the town lots, furnished the nails, and helped build the first houses in what since has become the city of Arbuckle. Known far and wide as 'The Home of the Almond'. Dedicated by Sam Brannan Chapter No. 1004, E Clampus Vitus, March 18, 1978."
 (Plaque located at Arbuckle.)

9. PENA ADOBE, Solano County, 8/19/1978
 (Plaque located 3 mile southwest of Vacaville, on Hwy. 80.)



10. JAMES CLYMAN, Napa County, 2/3/1979
 "JAMES CLYMAN, trapper and explorer. Prominent in opening the Far West. He was with Jedediah Smith in 1824 at South Pass. Prepared the way for the pre-Gold Rush pioneers. Settled in Napa County in 1848. Dedicated February 3, 1979, Sam Brannan Chapter No. 1004, E Clampus Vitus."
 (Plaque located 411 Coombsville Rd., Napa, in Tulocay Cemetery in lot bordered by Quail and Aspen Drives.)

11. CALISTOGA DEPOT, Napa County, 3/17/1979
 "CALISTOGA DEPOT. Built by Sam Brannan for the Napa Valley Railroad in 1868, one year before the completion of the Transcontinental Railroad. Second oldest remaining railroad station in California. Northern terminus of the Napa Valley Railroad and its successors, the Napa Valley branches of the Central Pacific Railroad and the Southern Pacific Railroad. Restored in 1978 by Calistoga Depot Associates. Dedicated March 17, 1979, Sam Brannan Chapter No. 1004, E Clampus Vitus."
 (Plaque located in Calistoga.)



12. SAM BRANNAN CENTER, Napa County, 3/24/1979
 "The Calistoga Sam Brannan Center, including Sharpsteen Museum and the Sam Brannan Cottage, is dedicated to Calistoga's early pioneers. The complex, named for Sam Brannan, Calistoga's original entrepreneur, will preserve and perpetuate the rich heritage of this area for future generations. Dedicated March 14, 1979, Sam Brannan Chapter No. 1004, E Clampus Vitus."
 (Plaque located at Calistoga, at Sam Brannan Center.)

13. NAPA'S CHINATOWN, Napa County, 8/18/1979
 "NAPA'S CHINATOWN. Napa's Chinatown was situated on both sides of First Street from this point west to Napa Creek. It occupied the area south of First to the Napa River where the Joss House stood near the juncture of Napa Creek off a narrow wagon road. East of the road were several wood framed houses on stilts and the Lai Hing Co.. Additional Chinese houses and the Quong Shew Chong Laundry were on the north side of First. The area was abandoned in 1929."
 "SHUCK CHAN. To honor a leading citizen of Napa. He came here from China in 1898 at the age of three. The owner of Lai Hing Co., he and wife Lee Kum were the last merchants of Chinatown. Dedicated August 18, 1979, Sam Brannan Chapter No. 1004, E Clampus Vitus."
 (Plaque located at intersection First & West Streets, Napa.)

14. SAM BRANNAN, Napa County, 10/24/1979
 "SAMBRANNAN - dreamer, promoter, prince of Californiacs. Here in 1859 he created the name 'Calistoga.' Dedicated October 24, 1954 by ECV."
 (Plaque located at Calistoga, at Sam Brannan Center.)

15. ROBERT LOUIS STEVENSON, Napa County, 3/15/1980
 "In 1880, Robert Louis Stevenson, for health reasons, spent a week with his bride in Calistoga. He then spent nearly two months on Mt. St. Helena at the old Silverado Mine, scene of the Silverado squatters. Dedicated March 3, 1980, Sam Brannan Chapter No. 1004, E Clampus Vitus."
 (Plaque located St. Helena, Silverado Museum, 1490 Liberty Street.)

16. THE HUMP, Solano County, 8/16/1980
 "Here, between 1942 and 1948, the painted ladies serviced the needs of our men from Travis AFB. Closed by order of an unsympathetic sheriff. Dedicated August 16, 1980, Sam Brannan Chapter No. 1004, E Clampus Vitus."
 (Plaque located at Rio Vista Junction, at Western Railway Museum.)

17. YOUNTVILLE, 3/7/1981
 "YOUNTVILLE. Yount town site was established by George C. Yount in 1855 at the southern boundary of his Rancho Caymus encompassing Madison Street and the area north thereof. The original site contained four full and two partial city blocks including six streets: Yount, Jefferson, Washington, Jackson, Monroe and Madison with a public square.



Lincoln has replaced Washington Street and Jackson is now part of the cemetery. Beginning in 1856 the area south of Madison Street was known for a time as Sebastapol as was the post office. The postal service changed the name to Yountville May 14, 1867. Dedicated March 7, 1981, Sam Brannan Chapter No. 1004, E Clampus Vitus."
 (Plaque located 6550 Yount St., Yountville.)



18. DAVE CAVAGNARO CIRCUS PLAZA, Napa County, 5/30/1981
 "DAVE CAVAGNARO CIRCUS PLAZA. Named in honor of David Ernest Cavagnaro, who served as a director of the Napa Town and Country Fair Board for 20 years. A devoted, active circus fan, originator of Napa's fair parades, civic minded citizen who was lovingly known as the Mayor of East Napa. He was a native Californian of Italian heritage who came to Napa in 1884, where he grew up to become a leader of the Italian community of Napa. Donated by Sam Brannan Chapter No. 1004, E Clampus Vitus. Placed By Napa County Historical Society, May 30, 1981."
 (Plaque located Napa Town and Country Fairgrounds, 535 Third St. next to east flagpole.)

19. SONOMA BREWING COMPANY, 8/15/1981

"THE SONOMA BREWING COMPANY, established under the leadership of John Steiner, was promoted in the pages of the Sonoma Index Tribune by its publisher Harry N. Granice, a major stockholder in the brewery. The brewery which had one of the best equipped brewing and ice plants in this section of the state, manufactured steam beer and ice in addition to having cold storage and creamery operations. It flourished for several years until outside competition (Grace Brothers Brewing Co.), legal battles, and the specter of prohibition plunged the ambitious venture into financial ruin. Dedicated August 15, 1981, Sam Brannan Chapter No. 1004, E Clampus Vitus."
(Plaque located at 315 Second Street East, in Sonoma.)

20. CORDELIA, Solano County, 3/20/1982

"CORDELIA. Established in the early 1850's by Capt. Robert Waterman and named for his wife Cordelia, the name was changed to Bridgeport after his home in Connecticut and then again to Cordelia. Intended as a major townsite to serve the shipping trade in the Suisun marsh, it was used primarily for shipping cobblestones to San Francisco from the local rock quarry, cordelia's largest industry. In the town's prime it contained three hotels, several general stores and a variety of other commercial establishments which served local farmers as well as shippers. Cordelia is the second oldest town in Solano County. Dedicated by Sam Brannan Chapter No. 1004, E Clampus Vitus, March 20, 1982."
(Plaque located on the corner of Cordelia road and Ritchie road.)

21. MONT LaSALLE VINEYARD, 8/13/1982

22. HAUS BLACKSMITH SHOP, Napa County, 8/21/1982
"THE HENRY HAUS BLACKSMITH AND WAGONMAKER SHOP 1897-1950. Henry Haus, a native of Switzerland, came to Pope Valley in 1889 at the age of 16. He opened his blacksmith shop in the adjacent wooden structure in 1897, caring for the needs of this valley until 1950. In 1899, he married Regula Anna and they raised four sons: Herman H., Ernest Jr., and George H.. He helped to organize the Pope Valley Farm Center and, as with his smithing, gave it his continuous attention during his lifetime. He died December 8, 1955. Dedicated by Sam Brannan Chapter 1004, E Clampus Vitus, in cooperation with the Napa County Historical Society, August 21, 1982."
(Plaque located at intersection of Pope Valley Rd. and Howell Mountain Rd.)

23. MOLLOY'S SPRINGS (OLD BROOKSVILLE HOTEL), San Mateo County, 1/15/1983
(Joint dedication Yerba Buena No. 1 (q.v.), Joaquin Murrieta 13, Monterey Viejo 1846, Mountain Charlie 1850.)
(Plaque located in South San Francisco, 1655 Mission Rd.)

24. SOSCOL HOUSE 1855, Napa County, 3/19/1983

"SOSCOL HOUSE - 1855. Built by Elijah True at the junction of the country road from Napa City and Old Ferry Road, now Soscol, which served the Soscol Ferry Crossing at Napa River west of here. The thriving transportation center developed here from the stagecoach and wagon traffic was called Suscol; taking that name from the Patwin Indian village site located on the banks of Suscol Creek east of this place at State Highway No. 29. Moved March 1978 to this site and refurbishing completed by H. & M. Carroll, December 1979. Dedicated by Sam Brannan Chapter 1004, E Clampus Vitus March 19, 1983."
(Plaque located on wall of frame building at Devlin Rd. & Soscol Ferry Rd. just south of intersection of Hwy. 12 and Hwy. 29.)

25. STONE BRIDGE, Napa County, 8/20/1983

"Departed this life February 1953. Located on a hill to the east and south of this point was a haven of comfort to many a man from the late 1800's until closed in 1953. Condemned by certain elements of society yet venerated by others that "labored in the vineyard" of Napa Valley. Often closed to the consternation of its feminine occupants, and reopened again and again, to the joy of its guests until operations were finally halted by the county sheriff at the insistence of the attorney general. Rest in Peace. Dedicated August 20, 1983, Sam Brannan Chapter No. 1004, E Clampus Vitus."

26. KNIGHT'S LANDING, Yolo County, 5/23/1984

(Rededication; see #2 above.)
(Plaque located at Knight's Landing, corner of Third Street and Highway 113.)

27. WILLIAM HOUSE, 7/28/1984

28. SEMORILE BUILDING, Napa County, 7/28/1984

"SEMORILE BUILDING 1888 - 1984. Built by Bartolomero Semorile and designed by Napa Architect, Luther M. Turton, as an outstanding example of Victorian commercial architecture. The Semorile family came to Napa in 1869 and started their grocery business just east of this site. Early in 1889, they established a new store and residence in this building. Remaining until their retirement in 1924. Dedicated July 28, 1984, Sam Brannan Chapter No. 1004, E Clampus Vitus."
(Plaque located at 975B First St., Napa)

29. FAITHFULLY RESPECTED, 7/1984

30. PENA ADOBE, Solano County, 8/18/1984

"PENA ADOBE. An expression of gratitude to William Gordon Huff. In recognition for his continuing dedication to the preservation of Western History through his world renowned artistic endeavors; for expressing his love of the Order through the sculptured likenesses of men who have labored to restore and sustain it; and for never failing to spread, by example, kindness, pride, humor and good fellowship throughout the organization. He himself stands as a character portrait of the

28.



great and beloved men he has worked so tirelessly to immortalize. Dedicated with esteem and affection by Sam Brannan Chapter No. 1004, Ancient and Honorable Order of E Clampus Vitus, August 18, 1984."

(Plaque located at Pena Adobe, west of Vacaville, just off interstate 80.)

31. DUHRING BUILDING 1891, Sonoma County, 3/23/1985 "DUHRING BUILDING 1891. This 'modern brick building' with its distinctive cupola was built in 1891 by Pioneer Sonoma merchant Frederick Duhring. It replaced the old Duhring Store, and adobe built in 1850, which housed his mercantile establishment. In 1911 this building was among those saved when water from a basement well was pumped on a disastrous fire. On this site there has been a business serving the citizens for over 130 years. Plaque placed by Sam Brannan Chapter No. 1004, E Clampus Vitus, March 23, 1985."

(Plaque located at Sonoma, at Sonoma Plaza.)

32. NICHELINI WINERY, Napa County, 8/24/1985 "NICHELINI VINEYARD Placed to commemorate the founding of the Nichelini Winery in 1890 by Anton Nichelini. Here on the southern slope of Sage Canyon he and wife Caterina built their home and winery and raised twelve children. Ownership passed to eldest son, William, in 1937 and to his son, James Edward, in 1963. James was winemaker and owner until his death, April 22, 1985. Dedicated by Sam Brannan, Chapter No. 1004 of E Clampus Vitus, August 24, 1985."

(Plaque located in the picnic area of the Nichelini Winery at 2950 Sage Canyon Rd..)

33. MOUNT OLIVET CEMETERY OFFICE AND STREET-CAR LINE, San Mateo County, 1/11/1986

(Joint dedication Emperor Norton Brigade, the Five Flatland Chapters: Yerba Buena No. 1 (q.v.), Joaquin Murrieta 13, Monterey Viejo 1846, Mountain Charlie 1850, Sam Brannan 1004.)

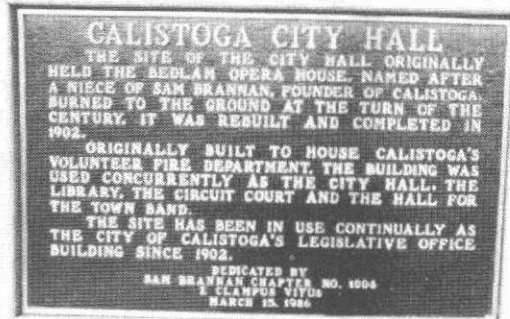
(Plaque located at Colma, Hillside Boulevard and F Street.)

34. CALISTOGA CITY HALL, Napa County, 3/15/1986

"CALISTOGA CITY HALL. The site of the City Hall originally held the Bedlam Opera House, named after a niece of Sam Brannan, founder of Calistoga. Burned to the ground at the turn of the century, it was rebuilt and completed in 1902. Originally built to house Calistoga's Volunteer Fire Department, the building was used concurrently as the City Hall, the Library, the Circuit Court and the hall for the town band. The site has been in use continually as the City of Calistoga's legislative office building since 1902."

(Plaque located 1232 Washington Street, Calistoga.)

34.



35. SAM BRANNAN PARK, Sutter County, 5/3/1986

(rededication, joint with Wm. Bull Meek - Wm. Morris Stewart Chapter No. 10 (q.v..))

(Plaque located at Yuba City, Sam Brannan Park, Gray Avenue south of Highway 20.)

36. UNION BREWERY, 5/3/1986

37. SUISUN CITY, Solano County, 8/23/1986

"SUISUN CITY. The name Suisun, meaning 'west wind', originated with the Patwin Indians. In 1850 Curtis Wilson and John Baker became the first Americans to sail to this site. They were followed a year later by Josiah Wing who erected an embarcadero, warehouse, wharf and general store. Streets were laid out in 1854. In 1868 the city was incorporated and the railroad reached here from Vallejo. As commerce expanded, 'dry' lots became scarce, creating, out of necessity, the city of Fairfield. Dedicated August 23, 1986, Sam Brannan Chapter No. 1004, E Clampus Vitus."

(Plaque located in front of 718 Main Street.)

39.

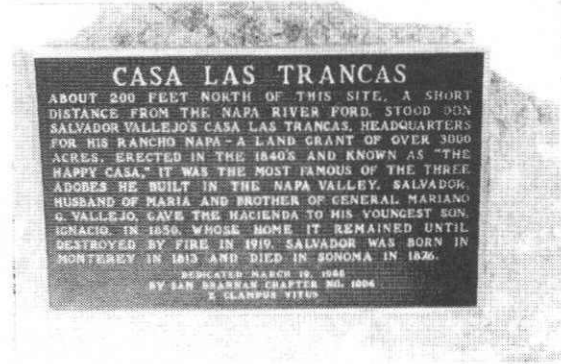


38. CAVALLI'S BLACKSMITH SHOP, San Mateo County, 1/10/1987
 (Dedicated by Emperor Norton Brigade - see Yerba Buena No. 1.)
 (Plaque located at Colma, Old Molloy's, 1655 Mission Street.)

39. WINSHIP BUILDING, Napa County, 3/21/1987
 "WINSHIP BUILDING 1888. When E. A. Winship arrived from Minneapolis in 1887, it became clear that he was a gentleman, and that he had money to invest. He purchased this site for \$15,000 and announced plans for a Brick building. The building, designed by Luther M. Turton, is one of the most notable of its time. In quality of design and location in the heart of town, it recalls the excitement of the period and the promise of the time."
 "WINSHIP BUILDING 1985. This building was restored in 1985 by architect Dan Peterson A.I.A., builder William Cocke, and developer Ging Chan. The project won a Napa Chamber of Commerce Civic Improvement Award for Historic Preservation. Dedicated March 21, 1987, E Clampus Vitus, Sam Brannan Chapter 1004."
 (Plaque located at Napa, First and Main Streets.)

40. LUTHER BURBANK HOME, Sonoma County, 8/15/1987
 "Luther Burbank was born in Massachusetts on March 7, 1849 and arrived in Santa Rosa in October 1875. In 1884 he purchased four acres surrounding this site as a place for horticultural experiments. Here he lived and worked until his death on April 11, 1926. Burbank's work led quickly to international fame and thousands of visitors came to see the "Plant Wizard" at work. Within the rich horticultural legacy left by Burbank are the Burbank Russett Potato and the Shasta Daisy. Dedicated August 15, 1987, by Yerba Buena No. 1 and Sam Brannan No. 1004 Chapters of E Clampus Vitus."
 (Joint dedication with Yerba Buena Chapter No. 1 (q.v.))
 (Plaque located at Santa Rosa, at Luther Burbank Home and Gardens, 204 Santa Rosa Avenue.)

41.



35.



41. CASA LAS TRANCAS, Napa County, 3/19/1985
 "CASA LAS TRANCAS. About 200 feet north of this site, a short distance from the Napa River ford, stood Don Salvador Vallejo's Casa las Trancas, headquarters for his Rancho Napa - a landgrant of over 3000 acres. Erected in the 1840's and known as the 'Happy Casa,' it was the most famous of the three adobes he built in the Napa Valley. Salvador, husband of Maria and brother of General Mariano G. Vallejo, gave the hacienda to his youngest son, Ignacio, in 1850, whose home it remained until destroyed by fire in 1919. Salvador was born in Monterey in 1813 and died in Sonoma in 1876. Dedicated March 19, 1985 by Sam Brannan Chapter No. 1004, E Clampus Vitus."
 (Plaque located at Napa, Trancas and Soscol Streets.)

42. WHISKEY CROSSING, Napa County, 8/20/1985
 "WHISKEY CROSSING. One and one half miles north of here, at the second crossing of Chiles Creek, is the spot known as "Whiskey Crossing." Although shrouded in folklore, the origin of the name is based upon a probable incident that took place in the early days of Napa County. A man returning from Joseph B. Chiles Rancho, Catacula, with a cask of whiskey, was fording the creek when the cask toppled from his wagon and burst apart in the creek. Another tale asserts that Teamsters traveling from Knoxville to Napa would break open or perhaps finish a bottle here, about the half way point in the journey. Dedicated August 20, 1988, Sam Brannan Chapter 1004, E Clampus Vitus."
 (Plaque located at the bottom of Chiles & Pope Valley Roads at Hennessy Lake.)

46.



43.



43. NAPA VALLEY RAILROAD, Napa County, 3/18/1989

"The Napa Valley Railroad ran from Soscol Landing, the most northerly terminus of the larger bay steamers, north 4.5 miles to this site, in Napa City. Ground was broken an November 21, 1864, and by January 1865 the grade and track laying was completed. The first train pulled into Napa City on July 10, 1865. Invited guests gathered at Revere House for appropriate ceremony, toasts, and lavish repast, free rides were given to all who wished to embrace the opportunity. Elected officers were present, A. Y. Easterby, Vice President; R. B. Woodward, Secretary; A Badlom Jr., Treasurer; Sam Brannan. Dedicated March 18, 1989, E Clampus Vitus Sam Brannan Chapter No. 1004."

(Plaque located at Main & Third Streets, Napa.)

44. HOTEL DeVILBISS, 8/19/1989

"HOTEL DeVILBISS. John DeVilbiss crossed the plains in 1865 and by 1869 had settled in Yolo County. He began construction of this hotel in the fall of 1889 and when it was completed, at a cost of \$51,000 including furnishings, was the showplace of the west side of the Sacramento Valley. The hotel had a large ornate lobby, banquet rooms and sample room. Countless salesmen who rode the passenger trains to Winters stopped here before calling on accounts in the Capay Valley. The Hotel withstood the earthquake of 1892 which leveled much of Winters and Vacaville. Dedicated August 19, 1989, Sam Brannan Chapter No. 1004, E Clampus Vitus."

(Plaque located on the hotel; southwest corner of Main Street and Railroad Avenue in Winters, California.)

45. CUTTING'S WHARF, Napa County, 3/24/1990

"CUTTING'S WHARF. Francis Cutting was born in Lowell Massachusetts in 1834 and arrived in San Francisco in 1858. After establishing himself in the fruit packing business he sought to expand operations to fruit growing as well and looked here for a wharf site and orchard land. In 1893 a wharf site and land for a road to it were acquired. From this wharf, paddle wheeled steamboats carried fruit from Cutting's orchards and, for a wharfage fee, the fruit of the area farmers to bay area canneries. Cutting's operations ended in 1909 and this wharf site was purchased by Napa County in 1924. Dedicated March 24, 1990, Sam Brannan Chapter No. 1004, E Clampus Vitus." (Plaque located at Cutting's Wharf on the Napa River off highway 12.)

46. KENWOOD DEPOT, Sonoma County, 8/18/1990

"KENWOOD DEPOT, originally called South Los Guilucos, was constructed of locally quarried basalt in 1888 at the cost of \$11,500. It was the only stone station on the 36.7 mile Northern Pacific Railway line which ran through the Sonoma Valley from Napa Junction to Santa Rosa. From here great quantities of stone used for paving the Embarcadero and Market Street were shipped to San Francisco. The last train to Kenwood from the Bay Area ran in 1936. Because of little traffic and the pressure of war the line was abandoned and the rails removed in 1942. The depot was purchased in 1940 by the Kenwood Improvement Club. Dedicated August 18, 1990, Sam Brannan Chapter No. 1004, E Clampus Vitus."

(Plaque located in Kenwood, 0.3 miles west of State Route 12 on Warm Springs Road.)

47. PENNGROVE, Sonoma County, 3/8/1991

"PENNGROVE. This area has also been known as the Penn's Grove and Penn Grove -- uncertainty surrounds the exact origin of the name -- was first settled in 1852. With the completion of the San Francisco and North Pacific Railroad in 1870, a town developed where the railroad crossed Main Street; then the main Santa Rosa - Petaluma road. From here the railroad carried thousands of cobblestones, which were quarried nearby, to Petaluma where they were loaded onto barges and shipped to San Francisco. After 1900, Penngrove developed into the second largest egg and poultry producing area in the country. Dedicated March 8, 1991, Sam Brannan Chapter No. 1004, E Clampus Vitus."

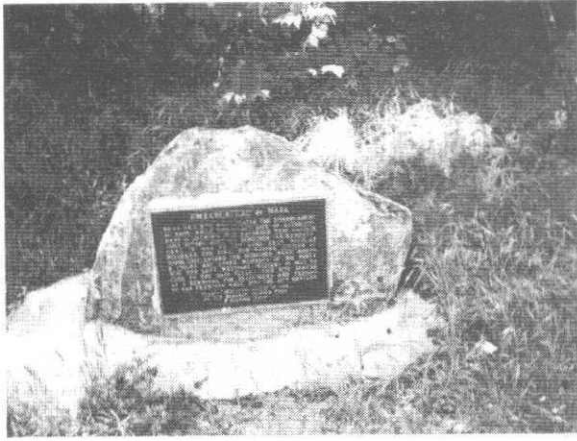
(Plaque located in Penngrove Park, Penngrove.)

48. EMBARCADERO De NAPA, Napa County, 8/17/1991

"EMBARCADERO De NAPA. Near this site was located the Embarcadero De Napa. While the exact date of establishment is unknown, it is recorded that Captain John Sutter sent his Schooner "Sacramento" here in 1884 to get lime from Nicholas Higuerra, the first nonnative citizen of Napa City. Aboard the schooner were Joseph B. Chiles and other members of his party, who had left Westport Missouri in 1883 to come to the Napa Valley. This served as the terminal for passengers and freight to San Francisco well in the 20th century. Dedicated August 17, 1991, E Clampus Vitus Sam Brannan Chapter No. 1004."

(Plaque located at intersection Division and Brown St., Napa.)

48.



49. VOLPI'S GROCERY, Sonoma County, 8/8/1992
 "VOLPI'S GROCERY. This building which was built around 1900 has always housed a grocery store. The business was purchased in 1925 by the Volpi Family. This grocery store was also a place where one could get a drink during Prohibition. When the local ranchers brought milk and eggs to town they would leave a grocery list to be filled while they had a drink in the back room. No alcohol was produced on the premises but was supplied by stills located within one mile of town. With the repeal of Prohibition Volpi's was among the first in Sonoma to be issued a liquor license. Plaque dedicated by Sam Brannan Chapter No. 1004, E Clampus Vitus, August 8, 1992."
 (Plaque located at Volpi's, corner of East Washington and Keller Streets in Petaluma.)

50. VACA VALLEY RAILROAD, Yolo County, 3/20/1993
 "VACA VALLEY RAILROAD. By 1875 the need to easily move grain, livestock, wood and stone from the Berryessa Valley and the surrounding area to markets was recognized. In the spring of 1875 work began on a 13 mile extension of the railroad from Vacaville to Theodore Winter's Crossing of Putah Creek. Brothers G. B. and A. B. Stevenson conceived the extension of their railroad as well as the plan for the new town of Winters. By May of 1875 a map of the townsite had been recorded and construction on both was progressing as fast as possible. The official opening of the new line took place on August 20, 1875. Dedicated March 20, 1993 Sam Brannan Chapter No. 1004, E Clampus Vitus."
 (Plaque located on north end of R. R. trestle on Railroad Avenue in Winters.)

51. WHITE SULPHUR SPRINGS, Napa County, 8/2/1993
 "WHITE SULPHUR SPRINGS. Situated on what was once a Mexican land grant to Dr. Edward Bale, White Sulphur Springs was discovered in 1848 and a resort opened in 1852, making this California's oldest. Wealthy San Franciscans traveled here in the latter half of the 19th century by steamer across the bay to Soscol Landing 4 miles south of Napa, and then by train and stage. The resort lost at least three grand hotels to fire during those years and in its prime was able to accomodate 1000

guests. For over 140 years this has been a forested hot springs retreat from the rigors of city life. Dedicated August 2, 1993, Sam Brannan Chapter 1004, E Clampus Vitus."
 (Plaque located at 3100 White Sulphur Springs Rd., St. Helena.)

53. WALKER OPERA HOUSE, Solano County, 3/19/1994
 "WALKER OPERA HOUSE. Kentucky native Sidney Clay crossed the plains in 1850 and in 1872 settled in the Vaca Valley where he eventually owned 1,200 acres. He was an organizer of the Vacaville Water and Light Company in the 1890's and in 1896 built this brick building complete with electric lights. It originally housed three stores on the ground floor, three offices upstairs as well as a large hall with a stage and seating for 600. Since Walker's death in 1908 the building has housed a lodge hall, a theater and other commercial establishments. Plaque dedicated March 19, 1994 by Sam Brannan Chapter 1004, E Clampus Vitus."

53.

