

CHIEF TRUCKEE CHAPTER 3691

(Chartered 1963)
(Nevada County)



1. TRUCKEE'S FIRST LOG CABIN, Nevada County, 8/15/1965

"1863 FIRST LOG CABIN. Erected by Joseph Gray at S.W. corner of present day Bridge and Spring Streets to serve Dutch Flat wagon road traffic over Donner Pass. Removed to this site 1907. Plaque No. 1, ECV., 1965 Chief Truckee No. 3691." (Plaque located on building at 10030 Church St. at Truckee.)



2. OLD TRUCKEE JAIL, Nevada County, 8/20/1967

"1875 OLD TRUCKEE JAIL. Built in Sept. 1875 and in continuous use until 1964. Plaque No. 2-3, Clampus Vitus, Chief Truckee No. 3691, 1966." (Plaque located at Truckee, on display in jail.)



3.

3. BALANCING ROCK, Nevada County, 7/15/1967

"??? B.C. - or - TRUCKEE'S FAMOUS ROCKING STONE. Whether of natural glacial formation -- or the work of an unknown tribe as a form of altar, as legend has it -- its exact origin will never be known -- this perfectly balanced stone -- until recently -- would rock at the touch of a finger."

"C. F. McGlashan built original enclosed tower in 1895 and used it to display his Donner Party relics and his daughter's famous butterfly collection. Site of an overnight stop for the Olympic torch --- 1960. Plaque No. 3, E Clampus Vitus, Chief Truckee Chapter 3691."

4. OLD CHINESE HERB SHOP, Nevada County, 7/13/1968

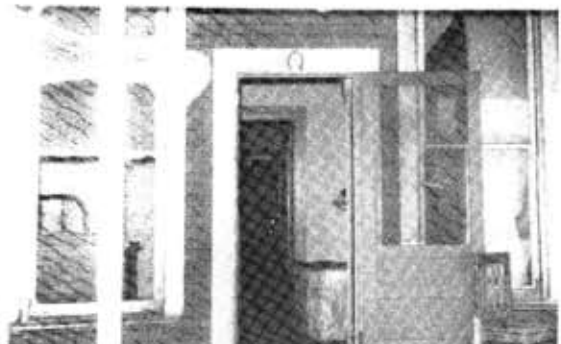
"OLD CHINESE HERB SHOP. Erected 1878. Plaque No. 4, E Clampus Vitus, Chief Truckee 3691, 1968."

(Plaque in possession of the Truckee Donner Historical Society)

There is also a large informational poster, with the wording: "OLD CHINATOWN. Construction of the Central Pacific Railroad over Donner Summit brought thousands of Chinese laborers here in 1868. They used 'squatter's rights' to build a ramshackle colony along the Truckee River on what is now River Avenue East. A huge fire destroyed Chinatown on May 29, 1875, but the Orientals rebuilt their community. Finally, on Nov. 18, 1878 a group of about 500, under the leadership of the 'Caucasian League,' tore down the shantytown and ordered the 1,000 or more Chinese to leave. They simply moved across the



4.



5.

river adjoining this former site of a Chinese Herb Shop, and built anew. A third fire, on Jan. 3, 1883 consumed the 'new' Chinatown and brought about the gradual end to the Chinese colony here. Dedicated July 13, 1968, Chief Truckee Chapter No. 3691, E Clampus Vitus."

5. JIBBOOM STREET, Nevada County, 7/27/1969
 "JIBBOOM STREET. Sierra Site of the World's Oldest Profession, 1867 - 1949. Chief Truckee Chapter 3691, E Clampus Vitus, July 26, 1969."
 (Plaque located in Pastime Club on Commercial Row, Truckee.)

6. OLD CAPITOL BUILDING, Nevada County, 8/8/1970
 "THE OLD CAPITOL, erected in 1870. In its heyday it was the social center of Truckee... Many of the leading thespians... politicians... and other celebrities of that era gathered here... Dedicated Aug. 8, 1970, Chief Truckee Chapter, E Clampus Vitus."
 (Plaque location unknown, previously at Truckee, in Capitol bar on Commercial Row.)



7. GRAND CENTRAL HOTEL, Placer County, 8/14/1971
 "GRAND CENTRAL HOTEL (1871-1895). Called the finest establishment between San Francisco and Virginia City. This elegant 3 1/2 story resort signified the start of North Tahoe's tourist industry. Terminal for the Tahoe - Truckee Flyer stage line and host to the Lake's steamship passengers. Boasted guests such as General Ulysses S. Grant and Philip H. Sheridan at \$20 per week, including meals. Destroyed by fire in the fall of 1895. Dedicated August 14, 1971 by Chief Truckee Chapter, E Clampus Vitus."
 (Plaque located at Tahoe City, at 520 North Lake Boulevard.)

8. OLD STONE GARAGE, Nevada County, 8/12/1972
 "TRUCKEE'S OLD STONE GARAGE AND SITE OF TOWN'S FIRST DWELLING. In 1863, Mr. Joseph Gray built Truckee's first structure on this site for use as the Dutch Flat - Donner Lake wagon road's toll station. The old log structure was moved in 1909 to the Englehart property on Church Street, one block east of this site, where it still stands and the Brethren of ECV dedicated a plaque in 1965. In 1909 Mr. D. J. Smith, with the help of European-trained stone masons, constructed the present building for use as a livery and garage. Dedicated August 12, 1972 by Chief Truckee Chapter, E Clampus Vitus."
 (Plaque location unknown, was at Truckee.)

9. SIERRA SUN - BONANZA, Nevada County, 8/11/1973
 "SIERRA SUN - BONANZA. Oldest continuous business enterprise in the Central Sierra, commenced publication in 1869 as the 'Truckee Republican' and was also informally known as the 'Truckee Screwdriver.' The definitive history of the Donner Party was first published in this newspaper in 1879 when author, teacher, statesman C. F. McGlashan was its editor. Dedicated August 11, 1973 by Chief Truckee Chapter, E Clampus Vitus."
 (Plaque located in office of Bonanza in Gateway.)



10. CHIEF TRUCKEE, Lyon County, Nevada, 7/20/1974
 "CHIEF TRUCKEE. The legendary Paiute leader: friend and guide to pioneers: breveted a 'Captain' by John C. Fremont: gave his name to a valley, river and town: died near here in 1860. Dedicated July 20, 1974 by E Clampus Vitus.
 Julia C. Bulette Chapter 1864
 Snowshoe Thompson Chapter 1827
 Chief Truckee Chapter 3691
 (total 7382)"
 (Plaque located at Dayton, on boulder on south side of Highway 50.)



11. CHIEF TRUCKEE, Nevada County, 8/10/1974
 "CHIEF TRUCKEE. The legendary Paiute leader: friend and guide to pioneers: breveted a 'Captain' by John C. Fremont: gave his name to this town and river: died near Dayton, Nevada, in 1860. Dedicated August 10, 1974, Chief Truckee Chapter 3691, E Clampus Vitus."
 (Plaque located one mile south of Truckee on Highway 267 at Truckee Regional Park.)

12. HOBART MILLS, Nevada County, 8/9/1975
 "HOBART MILLS. Walter Scott Hobart's Sierra Nevada Wood & Lumber Company moved machinery, buildings and railroad equipment here from Lake Tahoe in 1896. The town and business flourished for 40 years, ceasing operations in 1936. Fibreboard Corporation operated a mill and railroad here from 1946 to 1955, logging timber purchased from Southern Pacific. The old mill was burned in 1964. Hobart Mills was an important lumbering center and a major contributor to the heritage of the Eastern Sierra. Dedicated August 9, 1975, by Chief Truckee Chapter, E Clampus Vitus."
 (Plaque located at Hobart Mills, 5 miles north of Truckee off Highway 89.)

13. FIRST WAGONS ACROSS THE SIERRA, Nevada County, 8/14/1976
 "FIRST WAGONS ACROSS THE SIERRA, the Stephens - Townsend - Murphy Party with guidance from old Caleb Greenwood and Chief Truckee, brought their wagons up the Truckee River bed and on Nov. 25, 1844 - 191 days out of Council Bluffs, Iowa -- passed this point and crossed the mighty Sierra Summit directly to the West, blazing the famous California emigrant trail for all who followed. Dedicated August 14, 1976, Chief Truckee Chapter 3691, E Clampus Vitus."
 (Plaque located on Donner Pass Road at east end of Donner Lake.)

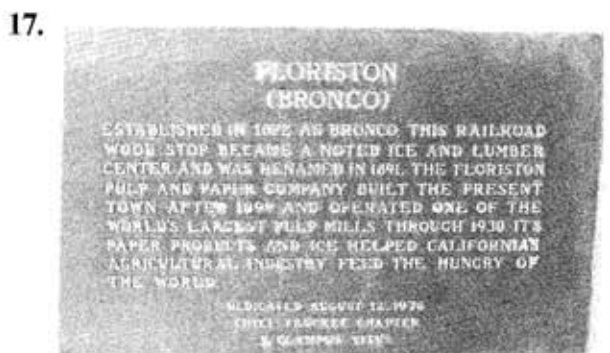
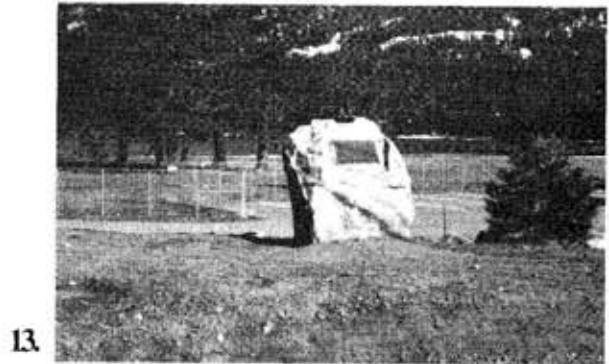
14. BALANCING ROCK, Nevada County, 7/4/1977
 (Rededication of Plaque No. 3 above.)

15. BOCA BREWERY, Nevada County, 8/13/1977
 "BOCA. Noted as a railroad, ice and lumbering center since 1867 but most fondly remembered and hereby honored as home of the Boca Brewery which was located 1/2 mile south of this point across the Truckee River. Boca Lager Beer was world famous and mercifully slaked the thirst of a grateful mankind. Dedicated August 13, 1977, Chief Truckee Chapter 3691, E Clampus Vitus."
 (Plaque located at east end of Boca Dam, about 5 miles east of Truckee and 1 mile north of I-80.)

16. OLD TRUCKEE JAIL, Nevada County, 7/4/1978
 (Rededication of Plaque No. 2 above.)

17. FLORISTON, Nevada County, 8/12/1978
 "FLORISTON (BRONCO). Established in 1872 as Bronco, this railroad wood stop became a noted ice and lumber center

and was renamed in 1891. The Floriston Pulp and Paper Company built the present town after 1899 and operated one of the world's largest pulp mills through 1930. Its paper products and ice helped California's agricultural industry feed the hungry of the world. Dedicated August 12, 1978, Chief Truckee Chapter, E Clampus Vitus."
 (Plaque located near Floriston, on Interstate Highway 80 at eastbound offramp for Floriston.)



18. JIBBOOM STREET, Nevada County, 7/4/1979
 (Rededication of Plaque No. 5 above.)

19. TAHOE CITY COMMONS, Nevada County, 8/11/1979
 "TAHOE CITY COMMONS. The 1863 townsite survey designated this parcel as the 'Commons'; President Grant confirmed this by Federal Patent in 1872. Steamers were launched and docked here and a railroad connected to serve mail and the tourist trade. The courts decided the people's ownership in 1927 and local civic groups built the present park. Dedicated August 11, 1979, Chief Truckee Chapter, E Clampus Vitus."
 (Plaque located at Tahoe City, at Commons Beach parking lot.)



19.

20. OLD CHINESE HERB SHOP, Nevada County, 7/4/1980
(Rededication of Plaque No. 4 above.)

21. CLINTON NARROW GAUGE RAILROAD, Nevada County, 8/9/1980

"CLINTON NARROW GAUGE RAILROAD. First steam railroad logging operation in the Truckee River Basin. Commenced operation in the late 1870's under the supervision of Fred Burckhalter, head of the Pacific Lumber and Wood Co. Line extended 10 miles along Juniper Creek with hope of eventual service to Lake Tahoe. Line abandoned in 1901 after several conflagrations at the PL&W Co. Mill in Clinton. Dedicated August 9, 1980, Chief Truckee Chapter 3691, E Clampus Vitus."

(Plaque located at Hirschdale Rd. at entrance to town.)

22. OLD STONE GARAGE, Nevada County, 7/4/1980
(Rededication of Plaque No. 8 above)

23. GATEKEEPER'S CABIN, Tahoe City, Placer County, 7/19/1981

"LAKE TAHOE OUTLET WORKS AND GATEKEEPERS CABIN. The first outlet works were constructed in 1870 by Col. A W. Von Schmidt. The stone and timber crib structure soon passed to the Donner Lumber & Boom Co. who continued to regulate, for a fee, the water flow for flotation of logs and later, power generation. The timber and power helped shore up the wealth of the Comstock Lode. By 1913 the U. S. Reclamation Service completed the present structure to serve the Newlands irrigation project. Contractual flow regulation demanded tending of the gates for which a cabin was built in 1910 to house the gatekeeper. The cabin served until 1968, was destroyed by fire in 1978 and the present cabin was completed in 1981. Dedicated July 19, 1981, North Lake Historical Society, Julia C. Bulette Chap. No. 1864, Snow shoe Thomson Chap. No. 1827, Chief Truckee Chap. No. 3691, E Clampus Vitus."

(Plaque located at Gatekeeper's cabin in Wm. B. Layton Park on south side of the Lake Tahoe outlet Dam.)

24. "601," Nevada County, 8/8/1981

"'601.' Truckee's vigilance committee, known as the '601', was born in response to the rise in crime and 'undesirables' which plagued the young railroad town. In late 1874 and early 1875, the '601' carried out a campaign to intimidate and rid the town

of those elements. After accidentally shooting one of their own members, the '601' disbanded until August 1889 when they reassembled for one last time. Though their goals were never fully achieved, the '601' did bring a semblance of law and order to the area through their vigilance. Dedicated August 8, 1891, Chief Truckee Chapter #3691, E Clampus Vitus."
(Plaque located at Truckee, at 71 Donner Pass Rd., 10000 Commercial Row.)

25. THEODORE DEHONE JUDAH, Nevada County, 8/14/1982

"THEODORE DEHONE JUDAH, 1826 - 1863. As Chief Engineer of the Central Pacific Railroad, Judah's engineering skill, political savvy and financial genius, along with the promoters' capital, culminated in the formation and construction of the Trans-Sierra leg of the first transcontinental railroad. While fighting the excesses of the railroad's promoters, he died without seeing his dream completed. Dedicated August 14, 1982, Chief Truckee Chapter No. 3691, E Clampus Vitus."
(Plaque located N. side of train station, 70 Donner Pass Rd., adjacent to State Historical Monument No. 780-6.)

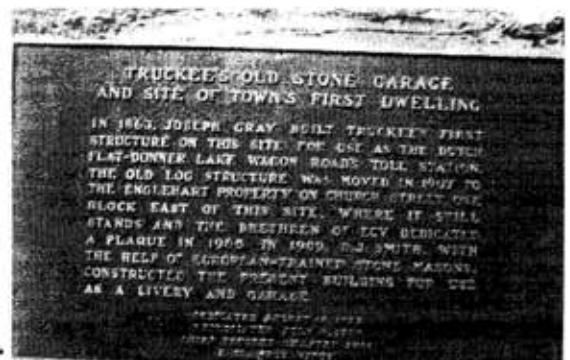
26. LAKE BIGLER, Nevada County, 8/13/1983

"LAKE BIGLER. During 1852 the name Lake Bigler came into common usage memorializing California Governor John Bigler (1852-1856), who gained notoriety by the rescue of a snowbound emigrant party at Lake Valley. Controversy with Nevada over his Southern sympathy led the California legislature to legalize the title in 1870. For 75 years, until 1945 when officially rescinded, this remained the legal title of Lake Tahoe. Dedicated August 13, 1985, Chief Truckee Chapter No. 3691, E Clampus Vitus."

(Plaque located in Kings Beach State Recreation Area, Bear St. & North Lake Blvd. (St. Hwy. 28), Kings Beach.)

27. CHINA WALL OF THE SIERRA, Nevada County, 8/11/1984

"CHINA WALL OF THE SIERRA. Charles Crocker, construction chief of the Central Pacific Railroad (C.P.R.R.), contracted for a work force of approximately 12,000 Chinese laborers to push the C.P.R.R. tracks over its trans-Sierra crossing on its race east to a meet with the Union Pacific at Promontory, Utah Territory. A railroad retaining wall and fill, constructed of Sierra granite, stands silently above on the pass as a lasting monument to these Asian master builders' who left



22.

an indelible mark on the history of California and the West. Dedicated August 11, 1984, Truckee-Donner Historical Society, Inc., Chief Truckee Chapter No. 3691, E Clampus Vitus." (Plaque located at S. side of old Highway 40 approx. 1/2 mile below summit.)

29.



28. CRYSTAL PEAK TOLL BRIDGE, State of Nevada, 8/10/1985

"CRYSTAL PEAK TOLL BRIDGE. In 1860, the first bridge, known as O'Neils Crossing, was built at this site. In August, 1867, the Crystal Peak Toll Bridge and Road Company was formed by J. P. Foulks and M. J. Smith. The toll bridge charged lumber Wagons, stage lines and local travellers crossing the Truckee River on their way to Verdi and the railroad depot. In 1906, spring flooding on the Truckee destroyed the bridge. In 1928, the bridge was replaced with the present single span Parker truss bridge. Dedicated August 10, 1985, Chief Truckee Chapter Mo. 3691, E Clampus Vitus." (Plaque located E. of South bridge approach on Dog Valley Rd., Verdi, Nevada.)

29. GEORGE SCHAFFER (STAR HOTEL), Nevada County, 8/9/1986

"GEORGE SCHAFFER 1828 - 1903. One of Truckee's earliest settlers, Schaffer in 1886 built the first lumber mill in the town. He freighted the locomotive 'San Mateo' to Truckee in a winter crossing of the Sierra prior to the laying of Central Pacific tracks. This building 'The Star Hotel' was built by Schaffer probably for his family. When mill operations were relocated up Martin Creek in 1871, this building was converted to a hotel and has remained in continuous operation to this day. For 24 years, the Truckee Basin supplied timber to railroads, mines and boom towns through 'Uncle George's' enterprises. Dedicated August 9, 1986, Chief Truckee Chapter No. 3691, E Clampus Vitus."

A small second plaque states: "Geno slept here." (Plaque located at Truckee, on outside front of Star Hotel, 10015 West River Road.)

30. ALLEXEY W. VON SCHMIDT, Placer County, 8/8/1987

"ALLEXEY W. VON SCHMIDT, 1821-1906. Russian emigrant, surveyor and visionary, Von Schmidt established the present California - Nevada State line between Lake Tahoe and Oregon. He formed the 'San Francisco and Lake Tahoe Water Works Company' which proposed, during the 1870's, to build

a dam on the Truckee near this spot to divert water, first into a tunnel to the western slope of Sierra and then on to San Francisco; the Transcontinental railroad would share the tunnel and the costs. Great Basin water users and monetary problems prevented the dream from becoming reality. Dedicated August 8, 1987, Chief Truckee Chapter 3691, E Clampus Vitus."

31. DUANE LEROY BLISS, Placer County, 8/13/1988

"DUANE LEROY BLISS 1833-1907. Timber baron and transportation mogul, D. L. Bliss - a one time Nevada banker - was best known for the railroads and steamships that he introduced to the Lake Tahoe Basin. He organized the Carson & Tahoe Lumber & Mining Company in 1871 and the Lake Tahoe arrow Gauge Railroad at Glenbrook in 1875 to provide timber from the Tahoe shores to the mines of Virginia City. In 1898, Bliss reorganized and built the Lake Tahoe Railway Transportation Company from the Southern Pacific Depot in Truckee south to Tahoe City and the Tahoe Tavern Hotel and pier where the train met the Bliss steamer 'TAHOE.' Dedicated August 13, 1988, Chief Truckee Chapter 3691, E Clampus Vitus." (Plaque located at Tahoe City, at Gatekeepers Cabin in Wm. B. Layton Park on south side of the Lake Tahoe outlet dam.)

32. TRUCKEE, Nevada County, 8/12/1989

"TRUCKEE, 'Jewel of the Eastern Sierras.' First known as Gray's Toll Station, then Coburn's Station, Truckee was established in 1863 Renowned for its lumber industry, trans-continental railroad, icehouses, saloons and red light district, Truckee has never been known for her laid back demeanor. It has always been a town where people came to entertain themselves on Friday and Saturday nights, just as it is today. Dedicated August 12, 1989, Chief Truckee Chapter No. 3691, E Clampus Vitus."

33. INCLINE AND THE GREAT INCLINE RAILWAY, Washoe County, Nevada, 8/10/1990

34. TRUCKEE ROUNDHOUSE, Nevada County, 8/10/1991

"C.P.R.R. TRUCKEE ROAD HOUSE. Needed to house and maintain engines of the Central Pacific Railroad during construction of the Trans-Sierra crossing, an enclosed wooden roundhouse was constructed here in 1868. It was razed by fire in March of 1869. A 16 Stall wooden structure was built that year as the maintenance facility of the C.P.R.R., Truckee Division. Another fire in 1876 resulted in construction of a 22 stall granite and wooden structure. This served thru 1942, when it was officially retired, a victim of the end of the steam era and consolidation of maintenance at other locations. The round houses were home to helper engines, fire trains and the first rotary snow plow of the Sierra. Dedicated August 10, 1991, Chief Truckee Chapter No. 3691 E Clampus Vitus." (Plaque located S. side of St. Hwy. 267. 200 ft. plus or minus east of Bridge St., Truckee.)

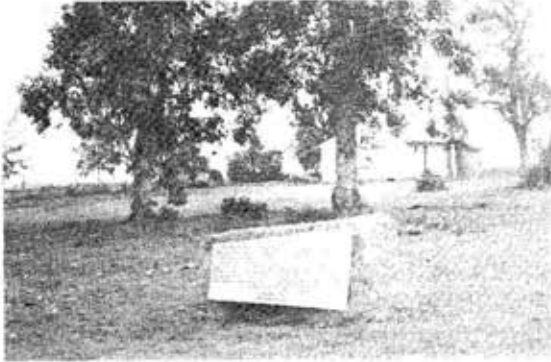
35. CLINTON NARROW GAUGE RAILROAD, Nevada County, 10/12/1991

(Rededication of Plaque No. 21 above.)

DR. SAMUEL GREGG GEORGE CHAPTER 1855

(Chartered 1974)
(Tulare County)

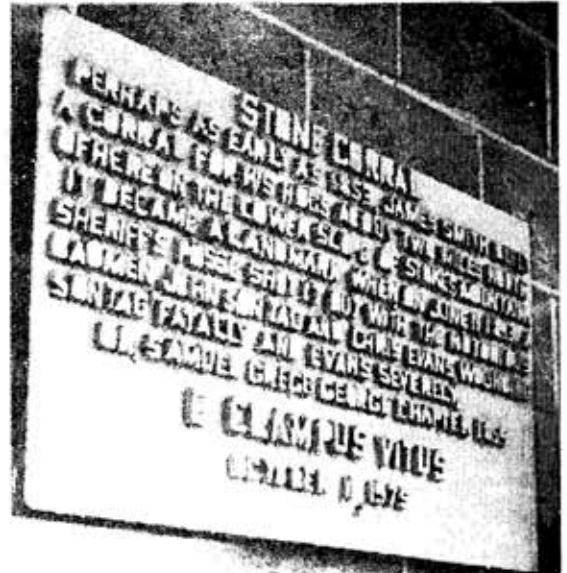
1.



1. TRAVER, Tulare County, 10/5/1974
"TRAVER. Traver townsite was laid out by the 76 Land and Water Company. An auction of lots was held on April 8, 1884. Within sixty days a small town was in existence. It prospered for a few years and was probably the largest grain shipping point in the United States. Irrigation caused the alkali to come to the surface in the area nearby and the land became worthless. Construction of the East Side Branch of the Southern Pacific diverted freight to Reedley and Dinuba. The Company sold its canals and water rights to the Alta Irrigation District in 1890. Traver almost disappeared. Dr. Samuel Gregg George Chapter No. 1855, E Clampus Vitus, 10/5/1974."
(Plaque located at Traver, at County Park.)

2. STONE CORRAL, Tulare County, 10/11/1975
"STONE CORRAL. Perhaps as early as 1853 James Smith built a corral for his hogs about two miles north of here on the lower slope of Stokes Mountain. It became a landmark when, on June 11, 1893, a sheriff's posse shot it out with the notorious badmen, John Sontag and Chris Evans, wounding Sontag fat. Ily and Evans severely. Dr. Samuel Gregg George Chapter 1855 E Clampus Vitus, October 11, 1975."
(Plaque located at office of Stone Corral Irrigation District.)

3. BEN HARRIS, Tulare County, 9/18/1976
"BEN HARRIS. Ben Harris, unwashed & profane, was known as 'The Greatest Liar in the Sierra.' He frequented Lemon Cove and the Mineral King back country and became part of the folklore. His mule was the smartest, his dog the meanest, his gun the shootingest and his eye the keenest for night on 75 years. He should be remembered when tall tales brighten the campfire. Dr. Samuel Gregg George Chapter No. 1855 E.C.V., Sept. 18, 1976."
(Plaque located at Lemon Cove, State Division of Forestry Fire Station.)



2.



3.



4.



5.

4. DR. SAMUEL GREGG GEORGE, Tulare County, 9/10/1977

"Born in Ohio Dr. George saw action in the Mexican War after studying medicine. He started a practice in Visalia about 1855. He served in the Indian War of 1856 and as a loyal Union man kept an eye on the Secesh in Tulare, Kern and Coso for Union Army intelligence. He found gold and silver in the Coso, explored Death Valley and filed magnesite claims in the Porterville Hills, his activities being widely reported in the press. He married the widow Wilcox in 1876, moved his practice to Porterville and made his home at this location. He died in 1905 at 91 and is buried in the Porterville cemetery. Dedicated September 10, 1977, Dr. Samuel Gregg George Chapter 1855, E Clampus Vitus."

(Plaque located at Porterville, at site of his home on East Mill Ave.)

5. SAN JOAQUIN ROLLER MILL, Tulare County, 10/28/1978

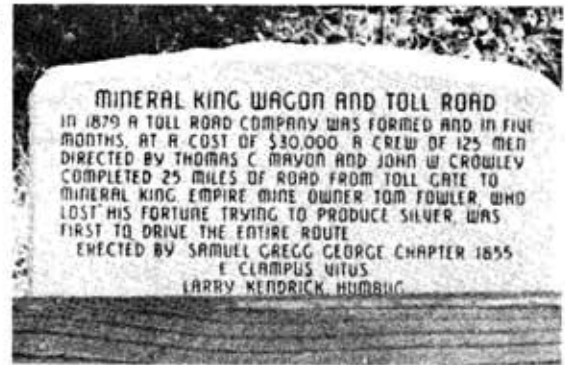
"SAN JOAQUIN ROLLER MILL. One of the first four roller mills in California. Located just to the north on the People's Ditch, this mill, operating from 1854 to 1913, produced much of the flour used by early settlers of the valley. E Clampus Vitus DSGG 1855. Dedicated October 28, 1978."

(Plaque located east of Visalia, just off Highway 198.)

6.



7.



6. VALLEY WALNUT INDUSTRY, Tulare County, 10/28/1978

"Thomas Jacob 1852-1929
Morphew Jacob 1862-1925

Founders of the San Joaquin Valley walnut industry. E Clampus Vitus DSGG 1855. Dedicated October 28, 1978."
(Plaque located east of Visalia, on McCain Ranch.)

7. MINERAL KING WAGON AND TOLL ROAD, Tulare County, (1979)

"MINERAL KING WAGON AND TOLL ROAD. In 1879, a toll road company was formed in five months, at a cost of \$30,000; a crew of 125 men directed by Thomas C. Mayon and John W. Crowley completed 25 miles of road from Toll Gate to Mineral King. Empire Mine owner Tom Fowler, who lost his fortune by trying to produce silver, was first to drive the entire route. Erected by Samuel Gregg George Chapter 1855, E Clampus Vitus."

(Plaque located at Hammond Station, junction of Highway 198 and Mineral King Road, near Three Rivers.)

8.



8. DUTCH CORNERS, Tulare County, 10/4/1980

"DUTCH CORNERS (Ducor). In 1885, our German homesteaders, Chris Joos, Ben Spuhler, Fred Schmidt, Gotlet Utley, sank a community water well where the corners of their land met. This junction became Dutch Corners. In 1888 the East Side Line of the Southern Pacific Railroad was built and the name was condensed to Ducor. Shade Braly, John Dennis, Charles Tibbens, Richard Shoup, and J. S. Righter formed the Ducor Land Company in 1909, stimulating community life and townsite development. Doctor Samuel Gregg George Chapter 1855, E Clampus Vitus, October 4, 1980."

(Plaque located at Ducor, just east of Highway 65.)

9. FARMERSVILLE, Tulare County, 10/15/1983

"FARMERSVILLE, Tulare County's third oldest community dates back to 1866, the year that Merrill Jasper and John Crowley established a general store at this location. The store was sold in 1868 to Thomas G. Brundage who made application for a post office and chose the name 'Farmersville' as befitting a town surrounded by small farms. Brundage and his son Oscar continued operating the store into the 1920's. By the 1870's Farmersville boasted a school, a blacksmith shop, two doctors, a newspaper, a lumberyard, a saloon and became a trading center for farmers and ranchers from as far east as Yokohl Valley. In 1902 the first church (Methodist) was formed. Hectic days were experienced in the early 1930s when the community became a refuge for migrant families from the drought-stricken Middle-West. Farmersville was incorporated as a city in 1960 with James Turnow as mayor, Carl Waddle as city clerk, and the city councilmen Truman Quails, Don Freeman, Willis Freeman, and Jim Stevens. Dedicated October 15, 1983, by Doctor Samuel Gregg George Chapter 1855, E Clampus Vitus."

(Plaque located at Farmersville.)

10. VISALIA TIMES - DELTA, Tulare County, 10/19/1985
"VISALIA TIMES-DELTA, established June 25, 1859. 'We have come to this young county with the paraphernalia of our trade, not for political or partisan ends, but with a sincere desire to advance its interests,' so wrote I. S. Carpenter, founder of the Tulare County Record and Fresno Examiner, the first paper to be published in the San Joaquin Valley. Little did Mr. Carpenter know where he penned those words that today's print journalists at the Times Delta would adhere to the spirit he proposed. In August 1859 John Shannon bought the newspaper and in October renamed it the Visalia Weekly-Delta. In 1928 the Delta merged with the Visalia Daily Times to become the Visalia Times-Delta. A strong journalistic tradition began with the early paper and still survives in the Visalia area as evidenced by the Times-Delta, the Valley's oldest continuously published newspaper. Dedicated on October 19, 1985, by Dr. Samuel Gregg George Chapter 1855 (County of Tulare) E CLAMPUS VITUS."

(Plaque located at Visalia.)

14.



11. CITRUS SOUTH TULE SCHOOL, Tulare County, 1986.

12. FIRST AIRPLANE IN TULARE COUNTY, Tulare County, 10/24/1987

"FIRST AIRPLANE IN TULARE COUNTY. At this site on February 11, 1942, Frank Bryant piloted the first airplane to land in Tulare County at what was then the Tulare County Fairgrounds. A Curtiss Pusher-Type biplane had been used by Glenn Curtiss to win a world speed title in France in 1909. Later, following a crash, it was rebuilt by Bryant who taught himself to fly this aircraft. Constructed of wood and bamboo, held together by wire, its wings covered by canvas, the plane was put through its paces by Bryant during a two-day air show, executing thrilling dips, dives, and turns at an unbelievable 60 miles per hour. It also raced an automobile around a kite-shaped track. Joining Bryant for the show was Roy Francis flying a Gage biplane built in Los Angeles by the Eaton Brothers. People packed the fairgrounds Grandstand and paid \$10,000 in admissions to get a close look at the fearless pilots with their newfangled flying machines and unknowingly ushered Tulare County into the modern age of aviation. Dedicated October 24, 1987, Doctor Samuel Gregg George Chapter 1855, E Clampus Vitus."

(Plaque located at Tulare, at Veterans Memorial Building.)

13. BATTLE MOUNTAIN, Tulare County, 10/20/1990

14. GABRIEL MORAGA, Tulare County, 10/5/1991

"GABRIEL MORAGA, Spanish Californian explorer and first white man of record to visit this area. He discovered a river now known as the Tule in April of 1806, named it Rio de San Pedro and followed its channel upstream possibly as far as River Island. Friar Pedro Munoz, diarist with Moraga wrote that the river is without water due to its thickness of willow, cottonwoods, torote and ash trees and also because of an abundance of sand (at the river mouth) but he also wrote that upstream there was good enough water and land to support a mission. An Indian rancheria with 400 souls was discovered by Moraga in the area that now includes the Porterville Municipal Golf Course and Altavista known as Chokowesho and occupied by the Coycheto tribe of Yakuts. This rancheria in a way was the forerunner of Porterville. Moraga, commanding a force of 25 men, had been sent into the San Joaquin Valley by California governor Jose Joaquin Arrellaga to locate a possible site for a Spanish mission and also to deal with neophytes who had run away from missions on the coast, taking with them horses, cattle and fire arms. Exploring from the Calaveras River to the Kern River, Moraga crossed the Rio de San Pedro very close to the location of this monument. Dedicated October 5, 1991, Dr. Samuel Gregg George Chapter 1855 of E Clampus Vitus."

(Plaque located at Porterville, at Plano and Date Streets.)

ESTANISLAO CHAPTER 58

(Chartered 1958)

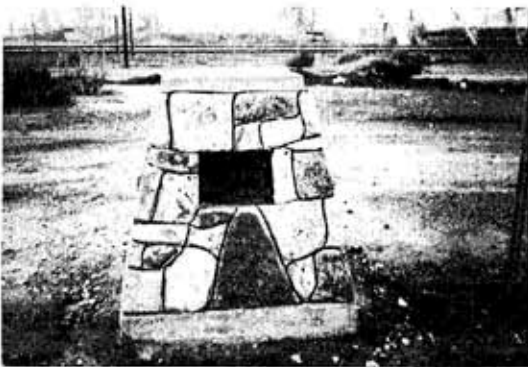
(Stanislaus and Merced Counties)



1.

1. TULLOCH MILL, Stanislaus County, 1/28/1961
"TULLOCH MILL. Commemorating the courtesies of the R. G. Hunter family and the citizens of Knight's Ferry for use of Tulloch Mill for charter initiation on E Stanislaus Chapter No. 58, Ancient and Honorable Order of E Clampus Vitus, June 21, 1958."

(Plaque located at Knight's Ferry, on N. wall of old mill bldg.)



2.

2. EMPIRE CITY, Stanislaus County, 10/28/1961
"EMPIRE CITY. 1 mile south of this spot is the site of Empire City. Founded 1850 by John G. Marvin. Head of navigation on the Tuolumne River, military supply depot and second county seat of Stanislaus County. Destroyed by the flood in 1861-62. Dedicated Oct. 28, 1961. E Stanislaus Chapter No. 58, E Clampus Vitus."

(Plaque located at Empire, on Santa Fe Ave., approximately 100 yards south of Yosemite Blvd.)

3. BURNEYVILLE, Stanislaus County, 5/12/1962
"BURNEYVILLE. Below this bluff is the site of Burneyville. Founded 1867 by Maj. James Burney, miner, Indian fighter, and public servant. As school superintendent and justice of the peace, Burney lived a full life. Died 1901 at the age of 87 years. Dedicated May 12, 1962. E Stanislaus Chapter No. 58, E Clampus Vitus."

(Plaque located at Riverbank, formerly at steel bridge over Stanislaus River on road to Escalon; later moved to northwest corner of First and High Streets.)

4. JOHN W. LAIRD, Stanislaus County, 11/7/1964
"LAIRD PARK. Named in honor of John W. Laird, pioneer of 1846. A Mexican War veteran, miner, ferryman, and civic leader. He established the first private school in this area, and served as commissioner in the organizing of Stanislaus County in 1854. Born in 1806 in Pennsylvania, died 1878 in California. Erected November 7, 1964, E Stanislaus Chapter No. 58, E Clampus Vitus."

(Plaque located at Laird Park.)



3.

5. ROBERT'S FERRY, Stanislaus County, 4/16/1966
"ROBERT'S FERRY. Originally located 3/8 mile downstream. This ferry was first established by Dr. D. B. Horr about 1850. Later owned by Dickenson and by Osburn. It was purchased by John W. Roberts in 1862 and moved to this location in 1865. This ferry was the principal crossing of the Tuolumne River on the old Stockton - Mariposa Road. Erected April 16, 1966. E Stanislaus Chapter No. 58, E Clampus Vitus."

(Plaque located ten miles east of Waterford, Highway 132 and Roberts Ferry Road.)

6. LANGWORTH, Stanislaus County, 10/15/1966
"LANGWORTH. Site of the town of Langworth. Founded in 1860 by Henry Langworthy. It was on a branch of the Old Mariposa Road that crossed the Stanislaus River at Islip's Ferry. Was part of the 8 square league Rancho granted by Mexico to A. B. Thompson in 1846. Langworth Post Office, 1864-1871, was moved to Oakdale when the railroad was built. Erected Oct. 15, 1966. E Stanislaus Chapter No. 58, E Clampus Vitus."

(Plaque located between Riverbank and Oakdale, Highway 108 at Langworth Road.)



5.

6.



7.



8.



9.



7. RANCHERIA DEL RIO ESTANISLAO, Stanislaus County, 4/20/1968

"RANCHERIA DEL RIO ESTANISLAO. Mexican landgrant, 11 sq. leagues - 48,887 acres - made to Francisco Rico and Jose A. Castro on Dec. 29, 1843 by Gov. Micheltorena. Patent signed by Pres. A. Lincoln on Jan. 31, 1863. Abraham Shell bought 31 leagues in 1863 and with Geo. H. Krause founded the famous Red Mountain vineyard and winery. Erected April 20, 1968, Estanislao Chapter No. 58, E Clampus Vitus."

(Plaque located 1/2 mile north of Knight's Ferry, on Old Sonora Road, at entrance to Rancheria del Rio Estanislao.)

8. WATERFORD, Stanislaus County, 4/19/1969

"WATERFORD. Formerly Bakersville, founded by W. W. Baker in 1862. Town surveyed in 1868 and named Waterford. Ferry operated until 1891 when first bridge was built. Post Office established June 20, 1872. Twelve loyal citizens cast 12 votes for town as county seat in 1871. Town moved from here when railroad came through in 1890. Erected April 19, 1969, Estanislao Chapter No. 58, E Clampus Vitus."

(Plaque located in Waterford, Highway 132, east of Dallas St.)

9. MERCED FALLS, Merced County, 10/17/1970

"MERCED FALLS. First known as California Rancho Crossing, then as Belt's Ferry. Site of large Indian rancharia. Post Office at Merced Falls opened Sept. 4, 1856. Flour and woolen mills built in 1854 and 1867. Town destroyed by fire in August, 1895. Yosemite Lumber Co. had large mill here from 1912 until 1943. Erected Oct. 17, 1970, Estanislao Chapter No. 58, E Clampus Vitus."

(Plaque located at Merced Falls.)

10. RANCHO DEL PUERTO, Stanislaus County, 10/23/1971

"RANCHO DEL PUERTO. A 3 sq. league - 13,340 acres - Rancho granted to Mariano and Pedro Hernandez on Jan. 20, 1844 by Gov. M. Micheltorena. Confirmed by the Land Commissioners on May 22, 1855 and by the U. S. District Court on March 22, 1857. Patent issued by Pres. A. Lincoln on Aug. 15, 1864 to S. G. Reed and R. S. Wade. The grant was purchased in Aug. 1866 by J. D. Patterson and subdivided in 1909 to form Patterson Colony. Erected Oct. 23, 1971, Estanislao Chapter No. 58, E Clampus Vitus."

(Plaque located at Patterson, in City Park, on El Circulo.)



10.

11. ORESTIMBA, Stanislaus County, 4/20/1974
 "ORESTIMBA. A local Indian word for 'meeting place.' Nearby are the Indians Indian Rocks and Sycamore Grove where the Mission Padres met with the local Indian tribes. Visited by La. Moraga and Fr. Viader on Oct. 25, 1810. Became a favorite watering place of travellers at El Camino Viejo, 'the old road,' that traversed the west side of the valley from San Pedro to San Antonio. Erected April 20, 1974. Estanislao Chapter No. 58, E. Clampus Vitus."
 (Plaque located on Interstate 5 freeway at Vista Point approximately 2 miles south of Stuhr Overpass.)

12. HORNETS, Merced County, 10/18/1975
 (Joint dedication with Manteca Chapter 1849.)
 (Plaque located at Hornets.)

13. JUSTICE, Stanislaus County, 4/3/1976
 "JUSTICE. This statue of justice stood on the roof of the court house built in 1873-74 for the fifth seat of justice of Stanislaus County. She, together with the bricks paving this courtyard are all that remains of the original building covering this spot. Placed April 3, 1976. Estanislao Chapter No. 58, E. Clampus Vitus."
 (Plaque located at Modesto in courtyard behind County Courthouse, 12th between H and I Streets.)



14.

14. THE OLD JAIL, Stanislaus County, 4/25/1976
 "THE OLD JAIL. Formerly at the foot of Main Street. Replaced one built in 1858, which burned in June, 1900. A few Clampers may have slept here, but Clampers helped restore this building in 1975. Placed April 25, 1976. Estanislao Chapter No. 58, E. Clampus Vitus."
 (Plaque located at LaGrange, on wall of Old Jail, east end of Main Street.)



15.

15. MILLER & LUX RANCH, Stanislaus County, 10/9/1976
 (Plaque located at Gustine.)

16. LaGRANGE, Stanislaus County, 10/29/1977
 (Plaque located at LaGrange.)

17. DENAIR, Stanislaus County, 10/14/1978
 (Plaque located at Denair.)



18.

18. KNIGHT'S FERRY STORE, Stanislaus County, 4/19/1980
 (Plaque located at Knight's Ferry.)

19. MODESTO IRRIGATION DISTRICT - TURLOCK IRRIGATION DISTRICT, Stanislaus County, 4/18/1987
 "MODESTO IRRIGATION DISTRICT - TURLOCK IRRIGATION DISTRICT. Both organized in 1887 to provide irrigation water to Turlock and Modesto areas. Jointly built La Grange Dam 1 1/2 miles downstream. Old Don Pedro Dam and Powerhouse now under waters of New Don Pedro Lake, completed 1923. New Don Pedro Dam and Powerhouse completed 1971. Erected April 18, 1987. Estanislao Chapter No. 58, E. Clampus Vitus."
 (Plaque located at the Visitor's Center, Lake Don Pedro, Near La Grange, CA.)

20. MILLER'S SALOON, Stanislaus County, 4/17/1988
 "MILLER'S SALOON. Built early 1860's by Fred Miller; The finest bar, pool hall, card room and dance hall in the area. Sold to R. V. Shaw in 1903 who operated a hotel here for years; later known as John Greenhalgh Hall. Napier family sold to the Knights Ferry History and Museum Associates in 1985. Erected 17 April, 1988, Estanislao 58, E. Clampus Vitus."
 (Plaque located Main St., Knights Ferry, CA.)



19.



20.

21. CAMP MILLER, Stanislaus County, 10/15/1988

"CAMP MILLER. Camp Miller was established in 1849 one half mile east of here by two companies of the 2nd U. S. Infantry. Their purpose was to prevent trouble between the miners, traveling to the southern mines via the Mariposa road, and the Indians. Local legend has it that seven soldiers are buried in an unmarked grave nearby. No ruins survive. Dedicated October 15, 1988. E Clampus Vitus, Estanislao No. 58." (Plaque located at 7000 block of Roeding Rd., near Oakdale.)

22. ADAMSVILLE, THE FIRST COUNTY SEAT, Stanislaus County, 10/20/1990

"ADAMSVILLE, THE FIRST COUNTY SEAT. The town of Adamsville was located approximately 1/2 mile west of this location. Founded in 1849 and named after Dr. David Adams, Adamsville became the county seat of the newly formed Stanislaus County on June 10, 1854. County government remained here until October 20, 1854 when it was moved to Empire City. No visible evidence of the town remains. Erected by E Clampus Vitus, Estanislao Chapter 58, October 20, 1990."

(Plaque located near corner of Jennings and Service Rd., Stanislaus County, near Modesto.)

23. MODESTO FIREFIGHTERS, Stanislaus County,

10/18/1991

"DEDICATED TO THE MODESTO FIREFIGHTER PAST AND PRESENT" This bell was originally located behind fire station on E. 7th Street, and was used as a siren for firefighters to fire calls from 1884 to the mid 1920's. The cry of "Fire" was the only way to summon firefighters, prior to its installation. It was also used to signal fireboy contests. The bell was first dedicated in Gracenda Park on Arbor Day, March 7, 1928, by Mrs. Ella Maze and Fitzhugh George Wallace. The monument was dismantled and the bell was placed in the sandbox of Gracenda Park when the widening of Needham Avenue became necessary. "May it stand as a monument to the stalwart character and sterling worth of the pioneer firemen and as a memorial of their lasting service." Modesto News-Herald, March 8, 1928. Dedicated October 18, 1991, Modesto Firefighters Local 1289, E Clampus Vitus Estanislao Chapter 58."

(Plaque located at Second and C Streets in Modesto.)



21.



22.



23.

EUREKA CHAPTER 101

(Chartered 1979)

(Humboldt and Del Norte Counties)

1. HUMBOLDT CITY, Humboldt County, 10/29/1977

"Site of Humboldt City - 1851. Dedicated October 29, 1977, by E Clampus Vitus."

(Eureka Chapter 101, as outpost of Trinitarianus Chapter 62, participated in dedication.)

(The plaque is submerged in Humboldt Bay; the site is about 30 feet into the waters, from Point Buhne on eastern shore of Bay.)



2.

2. EUREKA, Humboldt County, CRHL #477, 9/15/1979

"EUREKA, I have found it.' Eureka was founded as a town in 1850 and was incorporated as a city in 1874. Located on the remote northwestern coast of California, Eureka was the region's main port of entry by water in the 19th century before the construction of good access by land, and rose to historical prominence as the major social, political, and economic center of the region. 'Eureka' is a Greek expression and a popular mining term meaning 'I have found it.' California Registered Historical Landmark No. 477."



3.

"Plaque presented by the State Department of Parks and Recreation in cooperation with the Ancient and Honorable Order of E Clampus Vitus, Eureka No. 101, September 15, 1979."

(Plaque located at Eureka, on E Street, 150 feet north from intersection of E and Third streets.)

3. FORT HUMBOLDT, Humboldt County, CRHL #154, 5/10/1980

"FORT HUMBOLDT. By the early 1850's, newly arrived white settlers had moved into the Humboldt Bay area, causing conflict with the native inhabitants. To protect both Indians and settlers, Fort Humboldt was established in 1853 and operated until 1866. It became a focal point in the violent struggle between two cultures. Many native Americans were assembled here before removal to reservations. California Historical Landmark No. 154. Plaque presented by the State Department of Parks and Recreation in cooperation with the Ancient and Honorable Order of E Clampus Vitus Eureka Chapter No. 101, May 10, 1980."

(Plaque located at Eureka, south edge of Fort Humboldt parking lot.)



4.

4. TOWN OF TRINIDAD, Humboldt County, CRHL #216, 6/7/1981

"TOWN OF TRINIDAD. Founded Apr. 8, 1850, Trinidad is the oldest town on the Northern California coast. During the 1850's it served as a vital supply link between ships anchored at Trinidad Bay and miners in the Klamath, Trinity, Salmon River, and Gold Bluff mines. It was the county seat of Klamath County (now disbanded) from 1851 to 1854, but its population declined as Eureka and other port cities developed. California Registered Historical Landmark No. 216."

"Plaque placed by State Park & Recreation in cooperation with the Ancient and Honorable Order of E Clampus Vitus, Eureka Chapter 101, June 7, 1981."

(Plaque located at Trinidad, on Edwards Street, 100 yards north of Lighthouse.)



5. S. S. EMIDIO, Del Norte County, CRHL #497, 7/4/1982
 "S. S. EMIDIO. Nearby are portions of the hull of the General Petroleum Corporation tanker S. S. EMIDIO which on December 20, 1941 became the first casualty of the Imperial Japanese Navy's submarine force action on California's Pacific Coast. The ship was attacked some 200 miles north of San Francisco and five crew men were killed. Abandoned, the vessel drifted north and broke up on the rocks off Crescent City. The Bow drifted into the harbor, where it lay near this marker until salvage in 1950. California Registered Historical Landmark No. 497. Plaque placed by the State Department of Parks and Recreation in cooperation with the Eureka Chapter 101 of E Clampus Vitus, July 4, 1982."
 (Plaque located at Crescent City, corner of Front and South H Streets. Rusting hull's bow can be seen in upper left hand corner of picture.)

6. CARLOTTA HOTEL, Humboldt County, 5/11/1985
 "CARLOTTA HOTEL. Restored in 1984 by the Batini Family. Built in 1904 by John Vance. Served as a resort and stage stop. Survived the change from horses to horseless carriages, two fires, prohibition, and bureaucracy. In 1951 was the setting for the film 'Big Trees.' Dedicated by ECV 101 Eureka, May 12, 1985."
 (Plaque located at Carlotta, in Carlotta Hotel lobby.)

7. UNION PLANK WALK, RAIL TRACK AND WHARF COMPANY RAILROAD, Humboldt County, 9/13/1986 (9/26/1987)
 "Be it known that at this site in Dec. 1854 work began on the Union Plank Walk, Railtrack and Wharf Co. The railroad, in use by Jan. 1855, was the earliest operating state authorized railroad in California. The wharf, completed in May 1855, was 1.5 miles long and was extended 600 yards in 1875. The Arcata and Mad River Railroad is a surviving part of the original Union Company. Dedicated Sept. 13, 1986. Presented to the City of Arcata by the Ancient and Honorable Order of E Clampus Vitus Chapter 101 Eureka."
 (Plaque located at Arcata.)



8. CAPE MENDOCINO LIGHTHOUSE, Humboldt County, 5/14/1988
 "CAPE MENDOCINO LIGHTHOUSE. Lit Dec. 1, 1868 to Mar. 3, 1951. Built at 422 ft. elevation, the light swept 30 mi. to sea. The perilous waters here claimed nine ships. Mules took supplies to the site, 1.5 miles north, the westernmost in the U. S.. Dedicated to the Keepers of the Light. Erected by E Clampus Vitus 101."
 (Plaque located at Cape Mendocino 1.5 miles south of Lighthouse.)
9. ECV 101 GOLDEN HILLS PLAQUE, (on-going archival)
 (A memorial engraved with the names of our Brothers who have gone to the Golden Hills. Conceived and begun 1988. Location: secret.)
10. KLAMATH CITY, Del Norte County, 5/20/1989
 "By the mouth of the Klamath River, near Requa, is the site of Klamath City. The short-lived community was the first settlement in Del Norte County, 1850 - 1851. Erected by E Clampus Vitus 101, May 20, 1989."
 (Plaque located at Klamath, at Paul's Cannery, U. S. 101.)

10.



12. FERNBRIDGE, Humboldt County, 9/14/1991
"FERNBRIDGE. On Dec. 21, 1964 the Eel River crested here at 29 ft., causing death and devastation; 29 human lives, 4,000 head of dairy stock and properties worth millions were lost. Only Fernbridge and the will of our stout-hearted local people could withstand the river, flooded with rage. All the acts of heroism and impossible feats accomplished will never be known. There were just too many to tell. Erected Sept. 14, 1991 by the Ancient and Honorable Order of E Clampus Vitus Eureka Chapter 101."
(Plaque located at Fernbridge, at Fernbridge Market.)

11.



FRANK C. REILLY CHAPTER 5978

(Chartered 1973)
(Plumas County)

1. STEAM BOILER, Plumas County, 8/4/1975
"In appreciation to the family of Marko Kovich, 1909 - 1962. Frank C. Reilly Chapter, E Clampus Vitus, La Porte, Calif."
(Plaque located at La Porte, on old portable steam boiler which was used in the Morningstar Mine at Nelson Creek.)



11. CARLOTTA HOTEL, Humboldt County, May 1991
(Rededication of Plaque No. 6 above.)

2. THE ALTURAS SNOWSHOE CLUB 'DOPE IS KING', Plumas County, 6/29/1991
"THE ALTURAS SNOWSHOE CLUB, 'Dope is King,' La Porte, Plumas County, California. This plaque commemorates the origin of the world's first downhill snowshoe racing events which began in Plumas and Sierra Counties in the 1850's. The Alturas Snowshoe Club was the world's first organized ski club, having originated between Gibsonville and the Port Wine Snowshoe Club. By 1867 downhill ski racing had become a major sport with teams of riders from the 'Lost Sierra' mining camps competing for prize money and prestige on the historical 'long boards' of the snowshoe era of Plumas and Sierra Counties. Secret 'dope recipes' concocted by members of these snowshoe racing clubs resulted in lightning like downhill racing speeds unmatched by any competitors from the modern day ski racing era. The Alturas Snowshoe Club is hereby commemorated and dedicated by Frank C. Reilly Chapter No. 5978, E Clampus Vitus, June 29, 1991."
(Plaque located at La Porte, on Lexington Hill Road.)

12.



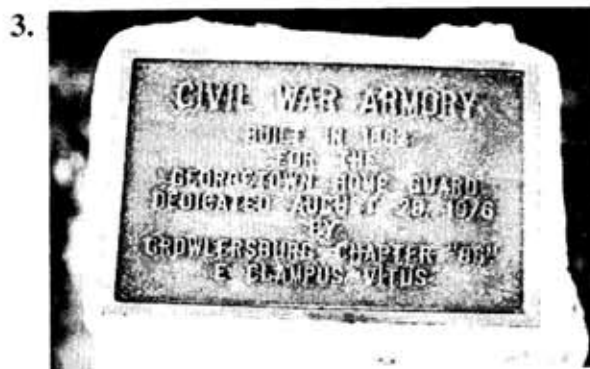
**GROWLERSBURG
CHAPTER 86**
(Chartered 1976)
(El Dorado County)



1., 2. & 6.

1. HAL PEABBLES, El Dorado County, 3/16/1974
"This plaque was donated in memory of HAL PEABBLES, Founder of Georgetown Clampers Club May 25, 1973. Purchased by his E Clampus Vitus brothers and friends. Dedicated March 16, 1974 by Georgetown Clampers Club."
(Plaque located at Georgetown Fire House.)

2. "DONKEY DICK" KEEFER, El Dorado County, 1976
"In memory of 'DONKEY DICK' KEEFER, 1st Humbug ECV 86, 1976."
(Plaque located at Georgetown Fire House.)



3. CIVIL WAR ARMORY, El Dorado County, 8/28/1976
"CIVIL WAR ARMORY. Built in 1862 for the Georgetown Home Guard. Dedicated August 28, 1976 by Growlersburg Chapter 86 E Clampus Vitus."
(Plaque located at Georgetown, at Old Armory Building, Main Street.)



4. SHANNON KNOX HOUSE, El Dorado County, 8/27/1977
"SHANNON KNOX HOUSE. Oldest residence in Georgetown, built in the late spring and summer of 1854. Dedicated August 27, 1977 by Growlersburg Chapter 86 E Clampus Vitus."
(Plaque located at Georgetown, at Main Street and Highway 193.)



5. BALSAR HOUSE, El Dorado County, 8/26/1978
"BALSAR HOUSE. Erected 1859 by a butcher, Joseph Olmstead. Growlersburg, erected at a cost of \$15,000.00. In 1889 it was bought by I.O.O.F. Dedicated August 26, 1978 by Growlersburg Chapter '86' E Clampus Vitus."

6. MEMORIAL WALL, El Dorado County, 8/25/1979
"MEMORIAL WALL. Dedicated by E Clampus Vitus, Chapter No. 86, Growlersburg, California, August 25, 1979. In memory of those Brothers who have gone before us to the Golden Hills. May they always be cherished and remembered by those who read these names.

- | | |
|----------------|--------------|
| Hal Peabbles | D. Aaserude |
| Spike Gurnsey | Henry Vyse |
| Walt Robin | Earl Gurnsey |
| Dutch Biere | Jesse Frame |
| Ted Johnson | Art Davison |
| Paul Hooper | B. Hampton |
| Geo. Clough | Alex Wallace |
| Dick Keefer | B. McMenamin |
| Dewey Wilhite" | |
- (Plaque located at Georgetown Fire House.)



7. UNCLE TOM'S CABIN, El Dorado County, 8/29/1981
 "UNCLE TOM'S CABIN. Built in 1864 by Tom Markham. Famous wagon and cattleman's shop. Dedicated August 29, 1981 by E Clampus Vitus 86, Georgetown, California."
 (Plaque located 24 miles east of Georgetown, on Wentworth Springs Road.)



WELLS FARGO BUILDING
 AND STAGE STOP
 BUILT IN 1852
 DEDICATED BY
 GROWLERSBURG CHAPTER '86'
 E CLAMPUS VITUS



EARL GURNSEY
 BORN 1946
 DIED 1982
 DEDICATED BY
 GROWLERSBURG CHAPTER '86'
 E CLAMPUS VITUS

8. WELLS FARGO BUILDING, El Dorado County, 1982
 "WELLS FARGO BUILDING AND STAGE STOP. Built in 1852. Dedicated by Growlersburg Chapter '86,' E Clampus Vitus."

9. EARL GURNSEY, El Dorado County
 "In memory of EARL GURNSEY. 1946 - 1982. E Clampus Vitus No. 86 Growlersburg."

10. ADMIRAL N. OWEN HOUSE, El Dorado County, 1984
 "ADMIRAL N. OWEN HOUSE. Established 1889. Dedicated by E Clampus Vitus Chapter '86,' 1984."
 (Plaque located at Georgetown, Main Street.)

11. MINERS CLUB, El Dorado County, 8/1984
 "MINERS CLUB. Built 1862. Operated as morgue during Civil War. Dedicated by Growlersburg Chapter '86' E Clampus Vitus. August 1984."
 (Plaque located at Georgetown, Main Street.)

12. GEORGETOWN HOTEL, El Dorado County, 8/1985
 "GEORGETOWN HOTEL. Built 1856. Destroyed twice by fire and rebuilt in 1896. Dedicated by Growlersburg Chapter '86' E Clampus Vitus, August 1985."
 (Plaque located at Georgetown.)

13. AMERICAN HOTEL, El Dorado County, 1986
 "'AMERICAN RIVER INN,' formerly AMERICAN HOTEL. Built 1853. Destroyed by fire. 1899. Rebuilt by F. Schmeder. 1899. Dedicated 1986 E Clampus Vitus Chapter 86."



ADMIRAL N. OWEN HOUSE
 ESTABLISHED 1889
 DEDICATED BY
 E CLAMPUS VITUS
 CHAPTER '86'
 1984



MINERS CLUB
 BUILT 1862
 OPERATED AS MORGUE DURING CIVIL WAR
 DEDICATED BY
 GROWLERSBURG CHAPTER '86'
 E CLAMPUS VITUS
 AUGUST 1984



12.



13.

GRUB GULCH CHAPTER 41-49

(Chartered 1979)

(Area: Madera County)



1.



2.

1. WASSAMA VILLAGE, Madera County, 10/11/86
 "WASSAMA VILLAGE. The village of Wassama (Leaves Falling) is the site of the last above ground Southern Miwuk Roundhouse. Built in 1903, religious ceremonies, dancing and gambling took place on the site until 1937. Southern Miwuk dances, including the 1870 Ghost Dance, are known to have been performed in the Roundhouse. The village also contains a cemetery, cremation site, and mourning area. Originally the Miwuk practiced cremation, but this was later discouraged by Spanish Padres and ground burial was encouraged. Dedicated October 11, 1986, by E Clampus Vitus, Grub Gulch Chapter 41-49."
 (Plaque located at Ahwahnee, Wassama Village, Road 628, Round House Rd., entrance to Wassama Round House State Historic Park.)

2. YOSEMITE MOUNTAIN SUGAR PINE RAILROAD, Madera County, 8/8/1987
 "YOSEMITE MOUNTAIN SUGAR PINE RAILROAD. From 1899 to 1931 the Madera Sugar Pine Lumber Company logged over 30,000 acres in the immediate area, sawing almost a billion and a half board feet of lumber. Woodburning Shay

locomotives hauled the logs from the woods over a large network of narrow gauge rails to the sawmill at Sugar Pine. The rough-sawn lumber was transported by a 54 mile flume to Madera in the San Joaquin Valley to be planed and shipped to a worldwide market."
 "The Yosemite Mountain Sugar Pine Railroad, founded in 1965, is a restoration of this by-gone era. The track now used is restored on exactly the same grade used from 1908 to 1924. The locomotives, cars and equipment used now to haul passengers instead of logs are authentic, dating back to the early 1900's, preserved for future generations. Dedicated August 8, 1987 by E Clampus Vitus, Grub Gulch Chapter 41-49."
 (Plaque located at Fish Camp, at 56001 Highway 41.)

3. GERTRUDE SCHOOL, Madera County, 5/20/1989
 "GERTRUDE SCHOOL. Built originally in 1878 by John Haley, named after his wife, Gertrude, it was situated at the base of Potter's Ridge across the Fresno River in Fresno County. In 1893 the school was relocated to the Crooks Ranch. In 1913 a new school was built at this site where it stands today. It was remodeled in 1937. Carol Pritchard was the last eighth-grade student to graduate in June of 1962. Jenny Nichols was



the first teacher. Robin Harris, the principle and Leonard Brown, were the last teachers when the school closed in November of 1964. Dedicated May 20, 1989, Grub Gulch Chapter 41-49 E Clampus Vitus, Ahwahnee, CA.” (Plaque located at Ahwahnee, at schoolhouse on Road 600, one-half mile south of Highway 49.)

4. KNOWLES, Madera County, 10/14/1989
 “KNOWLES. Founded by Frederick Erwin Knowles, who bought the land from Frank Ducy and who organized the Raymond Granite Company in what has been referred to as ‘Ducy’s Rock Pile’ In 1899, the Raymond Granite Company built a ‘spur’ track from the quarry to the main at Raymond. The railroad was called ‘Knowles Spur’ and the community was named ‘Knowles.’ Knowles built a schoolhouse in 1891, and in 1890 Fresno County took over the school. In 1893 the county was divided and the district became part of Madera County. Dedicated October 14, 1989, Grub Gulch Chapter 41-49, E Clampus Vitus, Knowles, California.” (Plaque located at Raymond, 35953 Road 606, Knowles Road.)



5. GRUB GULCH, Madera County, 5/5/1990
 “GRUB GULCH. ‘Gold Fever’ hit the streams in Madera County in 1849. Grub Gulch got its name from the fact that ‘miners could always pan enough gold from the river to grubstake themselves into better times.’ Grub Gulch developed after the Gambetta Mine opened in 1880. Other local mines included the Mammoth Mine, the Enterprise Mine, and the Josephine Mine. Local legend says the peak population reached 5,000. In its time there were two hotels, a rooming house, five saloons, a grocery store, and a general merchandise store, but never a church. Grub Gulch was burned down in 1920. Dedicated May 5th, 1990, Grub Gulch Chapter 41-49 E Clampus Vitus.” (Plaque located at site of original town, on Road 600, approximately 6 miles south of Highway 49.)

6. WASSAMA ROUNDHOUSE, Madera County, CRHL #1001, 5/16/1992
 “WASSAMA ROUNDHOUSE. Dating prior to the 1860’s, the Wassama Roundhouse was reconstructed in 1985 on the location of the previous four houses. In 1903, the third roundhouse was built using portions of the center pole from the two earlier houses. The Roundhouse served as the focal point of spiritual and ceremonial life for many native Californians. The Wassama Roundhouse continues to serve this purpose. California Registered Historical Landmark No. 1001.” “Plaque placed by the State Department of Parks and Recreation in cooperation with Grub Gulch Chapter 41-49, E Clampus Vitus, May 16, 1992.” (Plaque located at Ahwahnee, on north corner of Road 628 and Highway 49.)

7. SPRING VALLEY SCHOOL, Madera County, 12/5/1992
 “SPRING VALLEY SCHOOL. The original one room schoolhouse was built in 1889, on land granted by Charles O’Neil. Students were combined from the Hanover school of Hildbreth, Marysdale near Little Table Mountain, Zebra near Blackhawk and Mountain View school north of O’Neils. This is dedicated to our children, the pioneers of tomorrow, who will lead us into the new frontier. Dedicated on Dec. 5, 1992, E Clampus Vitus, Grub Gulch Chapter.” (Plaque located on Road 200, approximately 3 miles off Highway 41, before O’Neils.)